

Mineral Industry Surveys

For information, contact:

Daniel M. Flanagan, Copper Commodity Specialist
 National Minerals Information Center
 U.S. Geological Survey
 989 National Center
 Reston, VA 20192
 Telephone: (703) 648-7726, Fax: (703) 648-7757
 Email: dflanagan@usgs.gov

Samir Hakim (Data)
 Telephone: (703) 648-7955
 Fax: (703) 648-7975
 Email: shakim@usgs.gov

Internet: <http://minerals.usgs.gov/minerals/>

COPPER IN JULY 2018

In July 2018, domestic mine production of recoverable copper was 105,000 metric tons (t). The average daily mine production was 3,400 t, a decrease of 10% from that in June and a slight increase from that in July 2017. Year-to-date recoverable mine production through July 2018 was 703,000 t, a decline of 7% relative to the same period in 2017 (fig. 1, table 2).

Total refinery production in the United States was 95,300 t in July 2018; data for electrolytic and electrowon output, as well as refined production from scrap, are in table 4. The average daily total refinery production was 3,070 t, an increase of 5% compared with that in June and 5% greater than that in July 2017. Year-to-date refinery production through July 2018 was 642,000 t, a slight decrease relative to the same period in 2017 (fig. 1, table 4).

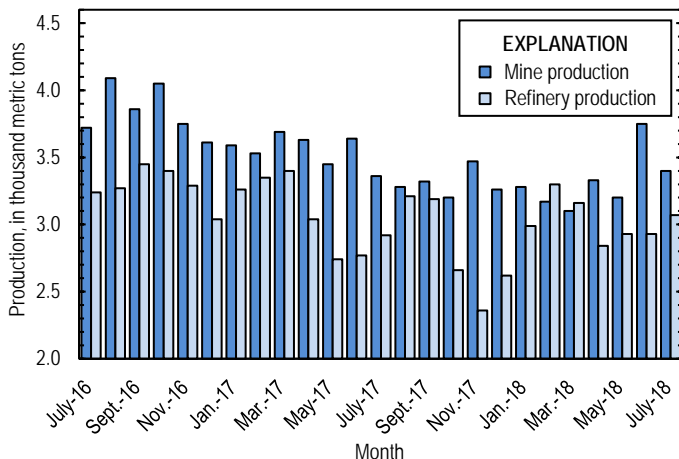


Figure 1. Average daily U.S. copper mine (recoverable) and refinery production from July 2016 through July 2018.

Domestic smelter production in July 2018 was 47,500 t. The average daily smelter output was 1,530 t, slightly higher than that in June and an increase of 4% compared with the daily average in July 2017. Year-to-date smelter production through July 2018 was 315,000 t, 7% greater than that through July 2017 (table 3).

Prices

The average COMEX spot copper price in July 2018 fell by 10% to \$2.79 per pound from \$3.12 per pound in June, which numerous industry analysts attributed to uncertainty in trade policies between the United States and China (Ramkumar and Hodari, 2018). The average July 2018 COMEX price was slightly higher than the COMEX average of \$2.73 per pound in July 2017 (fig. 2, table 11). The average price of New York dealers' number 2 scrap in July 2018 was \$1.99 per pound, a decline of 7% from \$2.14 per pound in June and an increase of 11% from \$1.80 per pound in July 2017 (fig. 2, table 12).

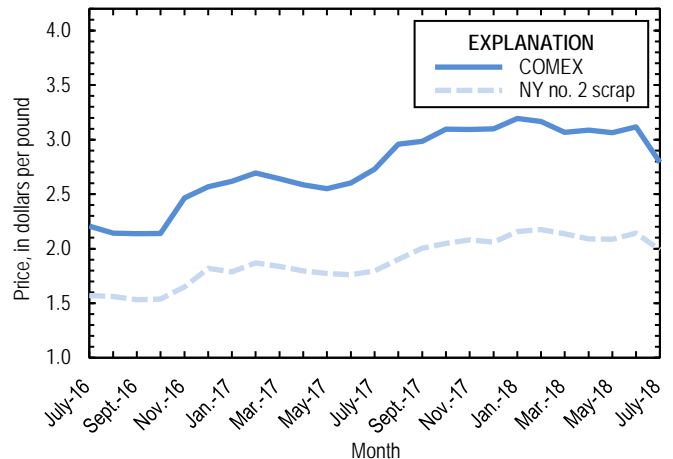


Figure 2. Monthly average COMEX copper price and New York no. 2 copper scrap price from July 2016 through July 2018. Sources: American Metal Market, Platts Metals Week.

Stocks

Refined copper stocks in the United States totaled 348,000 t at the end of July 2018, essentially unchanged from those in June and 57% more than those in July 2017. COMEX stocks decreased by 8%, stocks at wire-rod mills declined by 3%, and London Metal Exchange Ltd. stocks in U.S. warehouses were 15% higher compared with those at the end of June (fig. 3, table 10).

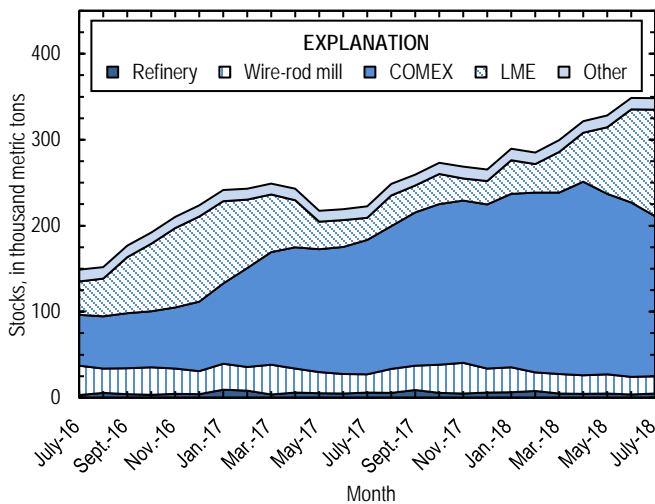


Figure 3. Monthly domestic refined copper stocks, by type, from July 2016 through July 2018. Sources: American Metal Market, London Metal Exchange Ltd., and U.S. Geological Survey.

Industry News

On July 12, Freeport-McMoRan Inc. (Phoenix, AZ) and Rio Tinto plc (United Kingdom) announced that PT Indonesia Asahan Aluminum would purchase interest from each company to become a 51% owner of the Grasberg Mine in Indonesia. Rio Tinto agreed to sell its entire stake, with Freeport retaining 49% ownership, down from 90.64%, and continued rights to operate the mine. In August 2017, Freeport had tentatively agreed to the

divestment in exchange for an extension of the operating license to 2041. The transaction was expected to close sometime in the second half of 2018 and, once finalized, would resolve the recent uncertainty in the long-term status of one of the world's leading copper mines (Freeport-McMoRan Inc., 2017, 2018).

References Cited

- Freeport-McMoRan Inc., 2017, Freeport-McMoRan announces framework for agreement with Indonesian Government regarding long-term operating rights for PT Freeport Indonesia: Phoenix, AZ, Freeport-McMoRan Inc. press release, August 29. (Accessed December 6, 2017, at <https://investors.fcx.com/investors/news-releases/news-release-details/2017/Freeport-McMoRan-Announces-Framework-for-Agreement-with-Indonesian-Government-Regarding-Long-Term-Operating-Rights-for-PT-Freeport-Indonesia/default.aspx>.)
- Freeport-McMoRan Inc., 2018, Freeport-McMoRan announces terms of PT Freeport Indonesia divestment and new long-term partnership with PT Inalum: Phoenix, AZ, Freeport-McMoRan Inc. press release, July 12. (Accessed July 20, 2018, at <https://investors.fcx.com/investors/news-releases/news-release-details/2018/Freeport-McMoRan-Announces-Terms-of-PT-Freeport-Indonesia-Divestment-and-New-Long-Term-Partnership-with-PT-Inalum/default.aspx>.)
- Ramkumar, Amrith, and Hodari, David, 2018, Tariff woes throttle copper, other metals: The Wall Street Journal, July 12, p. B1, B11.

List services and web feed subscribers are the first to receive notification of USGS minerals information publications and data releases. For information on how to subscribe, go to <http://minerals.usgs.gov/minerals/>.

TABLE 1
SALIENT STATISTICS OF THE COPPER INDUSTRY IN THE UNITED STATES¹

(Metric tons of copper content, unless otherwise specified)

	Source table ²	2017 ^p	2018			
			May	June	July	January– July
Production:						
Primary:						
Mine, recoverable	(2)	1,260,000	99,100	113,000	105,000	703,000
Smelter, total	(3)	470,000	39,000	45,700	47,500	315,000
Refinery:						
Electrolytic, domestic and foreign	(4)	482,000	41,600	39,800	45,900	308,000
Electrowon	(4)	557,000	46,000	44,900 ^r	46,000	312,000
Total	(4)	1,040,000	87,500	84,600	91,900	619,000
Secondary recoverable copper:³						
Refineries	(5)	40,100	3,330	3,400	3,390	23,100
Ingot makers ⁴	(5)	57,600	4,800	4,800	4,800	33,600
Brass and wire-rod mills	(5)	645,000	56,200	55,400	54,700	378,000
Foundries, etc. ⁴	(5)	46,800	3,900	3,900	3,900	27,300
Consumption:						
Apparent	(8)	1,870,000	143,000	131,000	152,000	1,030,000
Refined (reported)	(7)	1,770,000	146,000	138,000	155,000	1,010,000
Purchased copper-base scrap (gross weight)	(9)	924,000	79,500	78,700	78,100	541,000
Stocks at end of period:						
Total refined	(10)	266,000	328,000	348,000	348,000	348,000
Bliester, etc.	(10)	12,600	8,130	14,300	9,670	9,670
Price, U.S. producers cathode (cents per pound) ⁵	(11)	285.393	312.402	318.152	285.626	312.790
Imports:⁶						
Ore and concentrate	(13)	14,000	4,370	4	--	22,900
Refined	(13)	813,000	64,600	66,200	59,500	490,000
Exports:⁶						
Ore and concentrate	(14)	237,000	17,300	19,700	15,900	131,000
Refined	(14)	94,200	13,800	11,200	11,300	79,000

^pPreliminary. ^rRevised. -- Zero.

¹Data are rounded to no more than three significant digits, except prices; may not add to totals shown.

²Numbers in parentheses refer to the tables where these data are located.

³Copper recovered from copper-base scrap only.

⁴Estimated based on the monthly average of 2016 annual data.

⁵Source: Platts Metals Week.

⁶Source: U.S. Census Bureau.

TABLE 2
MINE PRODUCTION OF RECOVERABLE COPPER IN THE UNITED STATES¹

(Metric tons)

Period	Recoverable copper			Contained copper		
	Arizona	Others ²	Total	Electrowon	Concentrates ³	Total
2017:^p						
January–July	506,000	248,000	754,000	323,000	447,000	771,000
July	73,500	30,600	104,000	44,900	61,600	107,000
August	71,200	30,500	102,000	46,900	57,000	104,000
September	75,000	24,500	99,500	46,700	55,000	102,000
October	66,900	32,400	99,300	46,600	54,800	101,000
November	72,800	31,200	104,000	46,600	59,700	106,000
December	76,100	24,900	101,000	47,600	55,700	103,000
January–December	868,000	391,000	1,260,000	557,000	730,000	1,290,000
2018:						
January	68,800	32,900	102,000	46,800	56,900	104,000
February	61,000	27,700	88,600	40,600	50,000	90,500
March	68,200	27,800	96,000	44,300	53,700	98,000
April	65,400	34,600	100,000	43,200	58,800	102,000
May	69,300	29,800	99,100	46,000	55,200	101,000
June	70,600 ^r	41,900	113,000	44,900 ^r	70,100 ^r	115,000
July	66,800	38,500	105,000	46,000	61,400	107,000
January–July	470,000	233,000	703,000	312,000	406,000	718,000

^pPreliminary. ^rRevised.

¹Data are rounded to no more than three significant digits; may not add to totals shown.

²Includes production from Michigan, Missouri, Montana, Nevada, New Mexico, and Utah.

³Includes copper content of precipitates and other metal concentrates.

TABLE 3
COPPER PRODUCED AT SMELTERS IN
THE UNITED STATES^{1,2}

(Metric tons, copper content)

Period	Anode production
2017: ^P	
January–July	293,000
July	45,800
August	47,200
September	49,000
October	29,300
November	14,500
December	37,800
January–December	470,000
2018:	
January	53,900
February	42,200
March	41,500
April	44,800
May	39,000
June	45,700
July	47,500
January–July	315,000

^PPreliminary.

¹Includes blister and copper anode from primary or secondary sources.

²Data are rounded to no more than three significant digits; may not add to totals shown.

TABLE 4
 PRODUCTION OF REFINED COPPER, BY SOURCE AND METHOD OF RECOVERY¹

(Metric tons)

Period	Primary materials			Scrap	Total refined
	Electrolytically refined ²	Electrowon	Total		
2017: ^p					
January–July	303,000	323,000	626,000	23,700	650,000
July	42,400	44,900	87,300	3,220	90,600
August	49,200	46,900	96,100	3,340	99,400
September	45,700	46,700	92,400	3,310	95,700
October	32,500	46,600	79,100	3,280	82,400
November	21,100	46,600	67,700	3,240	70,900
December	30,400	47,600	77,900	3,250	81,200
January–December	482,000	557,000	1,040,000	40,100	1,080,000
2018:					
January	42,800	46,800	89,600	3,220	92,800
February	48,500	40,600	89,000	3,260	92,300
March	50,400	44,300	94,800	3,220	98,000
April	38,700	43,200	81,900	3,260	85,200
May	41,600	46,000	87,500	3,330	90,900
June	39,800	44,900 ^r	84,600	3,400	88,000
July	45,900	46,000	91,900	3,390	95,300
January–July	308,000	312,000	619,000	23,100	642,000

^pPreliminary. ^rRevised.

¹Data are rounded to no more than three significant digits; may not add to totals shown.

²From domestic and foreign source materials.

TABLE 5
COPPER RECOVERABLE IN UNALLOYED AND ALLOYED FORM FROM PURCHASED COPPER-BASE SCRAP¹

(Metric tons, copper content)

Period	Refineries ²		Ingot makers ³		Brass and wire-rod mills		Foundries, etc. ³		Total ⁴
	New scrap ⁶	Old scrap	New scrap	Old scrap	New scrap	Old scrap	New scrap	Old scrap	
2017: ^p									
January–July	11,700	11,900	5,600	28,000	357,000	21,700	21,400	5,920	463,000
July	1,680	1,540	800	4,000	50,700	3,010	3,060	845	65,700
August	1,680	1,660	800	4,000	52,100	3,360	3,060	845	67,500
September	1,680	1,630	800	4,000	49,200	2,870	3,060	845	64,100
October	1,680	1,600	800	4,000	52,200	3,350	3,060	845	67,600
November	1,680	1,560	800	4,000	49,900	3,110	3,060	845	65,000
December	1,680	1,570	800	4,000	48,000	2,500	3,060	845	62,400
January–December	20,100	20,000	9,600	48,000	608,000	36,900	36,700	10,100	790,000
2018:									
January	1,680	1,540	800	4,000	51,100	3,300	3,060	845	66,300
February	1,680	1,580	800	4,000	50,000	2,940	3,060	845	64,900
March	1,680	1,540	800	4,000	46,800	3,350	3,060	845	62,100
April	1,680	1,580	800	4,000	50,800	3,270	3,060	845	66,100
May	1,680	1,650	800	4,000	53,000	3,180	3,060	845	68,200
June	1,680	1,720	800	4,000	52,400	2,960	3,060	845	67,500
July	1,680	1,710	800	4,000	51,600	3,060	3,060	845	66,800
January–July	11,700	11,300	5,600	28,000	356,000	22,100	21,400	5,920	462,000

^pPreliminary. ⁶Estimated.

¹Data are rounded to no more than three significant digits; may not add to totals shown.

²Electrolytically refined and fire refined from scrap based on source of material at smelter or refinery level.

³Monthly data estimated based on the monthly average of 2016 annual data.

⁴Does not include an estimate, based on reported 2016 annual data, of 3,121 tons per month from new scrap and 2,490 tons per month from old scrap of copper recovered from scrap other than copper-base.

TABLE 6
 PRODUCTION, SHIPMENTS, AND STOCKS OF BRASS AND WIRE-ROD SEMIFABRICATES¹

(Metric tons, gross weight)

Period	Production		Shipments		Stocks, end of period	
	Brass mills	Wire-rod mills	Brass mills	Wire-rod mills	Brass mills	Wire-rod mills
2017: ^P						
January–July	514,000	772,000	514,000	771,000	28,400	26,700
July	73,000	97,200	73,200	97,400	28,400	26,700
August	75,000	111,000	74,200	112,000	29,300	25,800
September	74,000	108,000	73,600	103,000	29,700	30,300
October	74,100	107,000	74,100	109,000	29,700	28,500
November	72,500	100,000	72,800	100,000	29,300	28,300
December	72,100	93,400	72,000	91,100	29,500	30,600
January–December	882,000	1,290,000	881,000	1,290,000	29,500	30,600
2018:						
January	73,600	105,000	73,500	105,000	29,500	30,800
February	72,700	101,000	73,400	103,000	28,800	28,500
March	74,300	108,000	74,000	107,000	29,200	28,800
April	73,600	95,500	73,600	103,000	29,200	21,200
May	73,600	105,000	74,000	106,000	28,800	21,000
June	73,900	110,000	73,800	105,000	28,900	26,000
July	73,400	101,000	73,700	103,000	28,700	23,300
January–July	515,000	726,000	516,000	733,000	28,700	23,300

^PPreliminary.

¹Data are rounded to no more than three significant digits; may not add to totals shown.

TABLE 7
CONSUMPTION OF REFINED COPPER¹

(Metric tons)

Period	Brass mills	Wire-rod mills	Other plants ²	Total
2017: ^P				
January–July	244,000	779,000	39,300	1,060,000
July	35,000	96,300	5,620	137,000
August	35,300	98,600	5,620	140,000
September	35,200	108,000	5,620	148,000
October	35,400	107,000	5,620	148,000
November	34,700	99,900	5,620	140,000
December	34,900	92,700	5,620	133,000
January–December	420,000	1,280,000	67,400	1,770,000
2018:				
January	34,600	105,000	5,620	145,000
February	35,100	100,000	5,620	141,000
March	34,900	107,000	5,620	148,000
April	35,100	95,300	5,620	136,000
May	34,900	105,000	5,620	146,000
June	34,900	97,400	5,620	138,000
July	34,800	114,000	5,620	155,000
January–July	244,000	725,000	39,300	1,010,000

^PPreliminary.

¹Data are rounded to no more than three significant digits; may not add to totals shown.

²Monthly consumption data by ingot makers, chemical plants, foundries, and miscellaneous manufacturers are estimated based on the monthly average of 2016 annual data.

TABLE 8
U.S. APPARENT CONSUMPTION OF COPPER¹

(Metric tons)

Period	Refined copper production ²	Copper in old scrap ³	Refined general imports ⁴	Refined exports ⁴	Stock change during period	Apparent consumption
2017: ^P						
January–July	626,000	85,000	486,000	66,000	-590	1,130,000
July	87,300	11,900	91,900	7,140	3,230	181,000
August	96,100	12,400	54,200	6,680	26,000	130,000
September	92,400	11,800	84,400	7,170	11,100	170,000
October	79,100	12,300	70,600	5,210	13,400	143,000
November	67,700	12,000	66,500	4,400	-3,970	146,000
December	77,900	11,400	58,900	4,810	-3,280	147,000
January–December	1,040,000	145,000	820,000	94,200	42,700	1,870,000
2018:						
January	89,600	12,200	81,100	9,550	23,400	150,000
February	89,000	11,900	77,500	7,270	-3,810	175,000
March	94,800	12,200	75,200	12,100	14,300	156,000
April	81,900	12,200	62,400	13,700	21,500	121,000
May	87,500	12,200	64,600	13,800	7,020	143,000
June	84,600	12,000	66,200	11,200	20,100	131,000
July	91,900	12,100	59,500	11,300	195	152,000
January–July	619,000	84,700	486,000	79,000	82,800	1,030,000

^PPreliminary.

¹Data are rounded to no more than three significant digits; may not add to totals shown.

²Includes electrolytic production and electrolytically-refined copper from primary materials. All refined copper produced from scrap is included in "Copper in old scrap."

³Includes reported monthly production of copper from old scrap of copper-base, an estimate for annual reporters, and a monthly average of copper from non-copper-base materials based on 2016 annual data.

⁴Source: U.S. Census Bureau.

TABLE 9
CONSUMPTION OF PURCHASED COPPER-BASE SCRAP¹

(Metric tons, gross weight)

Period	Smelters and refineries		Ingot makers ²		Brass and wire-rod mills ³		Foundries, etc. ²		Total scrap used
	New scrap ^e	Old scrap	New scrap	Old scrap	New scrap	Old scrap	New scrap	Old scrap	
2017: ^p									
January–July	12,100	11,200	14,400	35,900	413,000	22,500	25,600	6,690	541,000
July	1,730	1,590	2,060	5,130	58,700	3,070	3,660	956	76,900
August	1,730	1,590	2,060	5,130	60,100	3,450	3,660	956	78,700
September	1,730	1,690	2,060	5,130	57,100	2,920	3,660	956	75,200
October	1,730	1,650	2,060	5,130	60,200	3,460	3,660	956	78,900
November	1,730	1,610	2,060	5,130	57,900	3,180	3,660	956	76,200
December	1,730	1,620	2,060	5,130	55,900	2,560	3,660	956	73,600
January–December	20,800	19,300	24,700	61,600	704,000	38,000	43,900	11,500	924,000
2018:									
January	1,730	1,590	2,060	5,130	59,000	3,380	3,660	956	77,500
February	1,730	1,630	2,060	5,130	57,900	3,010	3,660	956	76,100
March	1,730	1,590	2,060	5,130	54,700	3,450	3,660	956	73,300
April	1,730	1,630	2,060	5,130	58,800	3,380	3,660	956	77,400
May	1,730	1,700	2,060	5,130	61,000	3,270	3,660	956	79,500
June	1,730	1,770	2,060	5,130	60,400	3,030	3,660	956	78,700
July	1,730	1,770	2,060	5,130	59,600	3,110	3,660	956	78,100
January–July	12,100	11,700	14,400	35,900	412,000	22,600	25,600	6,690	541,000

^pPreliminary. ^eEstimated.

¹Data are rounded to no more than three significant digits; may not add to totals shown.

²Monthly data estimated based on the monthly average of 2016 annual data.

³Consumption at brass and wire-rod mills assumed equal to receipts.

TABLE 10
COPPER STOCKS AT END OF PERIOD¹

(Metric tons)

Period	Crude copper ²	Refined copper					Total refined	
		Refineries ³	Wire-rod mills ³	Brass mills ³	Other ⁴	Comex		LME ⁵
2017:^P								
July	11,000	5,810	21,500	7,920	5,470	156,000	25,800	222,000
August	7,350	5,610	27,800	7,740	5,470	166,000	35,900	248,000
September	12,100	8,740	28,600	7,440	5,470	178,000	31,300	260,000
October	13,600	5,620	32,600	7,650	5,470	187,000	34,800	273,000
November	16,700	4,700	35,700	8,190	5,470	189,000	25,600	269,000
December	12,600	5,840	28,000	7,870	5,470	191,000	27,100	266,000
2018:								
January	15,000	6,190	29,000	8,040	5,470	202,000	38,800	289,000
February	14,600	7,690	21,800	7,880	5,470	209,000	33,200	285,000
March	9,010	4,790	22,600	8,000	5,470	211,000	47,600	300,000
April	9,880	4,500	21,600	7,870	5,470	225,000	57,000	321,000
May	8,130	4,960	22,200	8,190	5,470	210,000	77,200	328,000
June	14,300	3,590	20,600	7,980	5,470	203,000	108,000	348,000
July	9,670	4,980	19,900	8,180	5,470	186,000	124,000	348,000

^PPreliminary.

¹Data are rounded to no more than three significant digits; may not add to totals shown.

²Copper content of blister and anode.

³Stocks of refined copper as reported; no estimates are made for nonrespondents.

⁴Monthly estimates based on 2016 annual data, comprising stocks at ingot makers, chemical plants, foundries, and miscellaneous manufacturers.

⁵London Metal Exchange Ltd., U.S. warehouses.

TABLE 11
 AVERAGE PRICE OF COPPER IN THE UNITED STATES
 AND ON THE LONDON METAL EXCHANGE

(Cents per pound)

Period	U.S. producers cathode ¹	Comex first position ²	LME cash price Grade A
2017:			
July	277.821	272.883	271.162
August	300.928	295.878	293.822
September	303.468	298.405	298.585
October	314.747	309.559	308.299
November	314.717	309.417	309.581
December	314.825	309.825	308.471
Year	285.393	280.425	279.518
2018:			
January	324.640	319.390	321.137
February	322.495	316.745	317.574
March	312.083	306.683	308.227
April	314.129	308.754	310.169
May	312.402	306.402	309.409
June	318.152	311.714	315.436
July	285.626	279.126	283.387
January–July	312.790	306.973	309.334

¹Sum of "Comex high grade first position" and "NY dealer premium cathode."

²Listed as "Comex high grade first position."

Source: Platts Metals Week.

TABLE 12
 AVERAGE BUYING PRICES FOR COPPER SCRAP

(Cents per pound)

Period	Brass mills No. 1 scrap	Refiners No. 2 scrap	Dealers (New York)	
			No. 2 scrap	Red brass turnings and borings
2017:				
July	267.82	243.18	179.50	146.00
August	285.74	260.67	190.07	151.17
September	286.25	261.35	200.30	154.45
October	297.34	270.18	204.95	156.18
November	295.42	267.25	208.00	157.50
December	298.58	271.05	206.00	157.00
Year	271.69	245.68	189.25	149.55
2018:				
January	308.14	279.00	215.79	160.81
February	304.63	275.68	217.50	161.00
March	295.18	268.32	213.50	160.00
April	299.33	274.36	209.02	158.00
May	297.50	271.68	208.59	158.55
June	301.67	274.14	214.17	160.57
July	269.95	239.48	198.93	151.29
January–July	296.63	268.95	211.07	158.60

Source: American Metal Market.

TABLE 13
U.S. IMPORTS FOR CONSUMPTION OF COPPER (UNMANUFACTURED), BY CLASS¹

(Metric tons, copper content)

Country or locality	Ore and concentrates ²			Matte, ash, and precipitates ³			Blister and anodes			Refined		
	2018			2018			2018			2018		
	2017	July	January– July	2017	July	January– July	2017	July	January– July	2017	July	January– July
Belgium	--	--	--	69	32	98	--	--	--	(4)	--	10,100
Bolivia	--	--	--	--	--	--	--	--	--	1,560	--	439
Brazil	--	--	--	--	--	--	--	--	--	3,580	--	297
Canada	6	--	40	284	46	331	--	(4)	(4)	209,000	13,500	106,000
Chile	--	--	--	--	--	--	--	--	--	486,000	35,700	307,000
China	--	--	8	33	--	(4)	--	--	--	50	10	45
Congo (Kinshasa)	--	--	--	--	--	--	--	--	--	9,190	--	3,260
Finland	--	--	--	--	--	--	359	33	186	4	--	--
Germany	--	--	--	7	--	--	(4)	(4)	(4)	2,310	131	683
India	--	--	--	--	--	--	--	--	--	224	--	(4)
Japan	--	--	--	76	--	--	2	(4)	(4)	4,630	383	2,370
Malaysia	--	--	--	--	--	--	126	--	54	--	--	--
Mexico	14,000	--	22,900	588	78	434	--	--	--	75,200	5,700	37,800
Netherlands	--	--	--	166	--	66	3	1	1	3	--	(4)
Peru	--	--	--	--	--	--	--	--	--	18,000	2,000	7,010
South Africa	--	--	--	--	--	--	--	--	--	1,510	--	963
Other	9	--	--	397	--	36	14	(4)	2	1,230	2,030	14,000
Total	14,000	--	22,900	1,620	157	964	504	35	245	813,000	59,500	490,000

-- Zero.

¹Data are rounded to no more than three significant digits; may not add to totals shown.

²Copper ore and concentrates only; excludes copper contained in ore and concentrates of other metals.

³Copper matte, ash, and precipitates only; excludes the copper content of mattes and ashes of other metals.

⁴Less than ½ unit.

Source: U.S. Census Bureau.

TABLE 14
U.S. EXPORTS OF COPPER (UNMANUFACTURED), BY CLASS¹

(Metric tons, copper content)

Country or locality	Ore and concentrates ²			Matte, ash, and precipitates ³			Blister and anodes			Refined		
	2018			2018			2018			2018		
	2017	July	January– July	2017	July	January– July	2017	July	January– July	2017	July	January– July
Belgium	--	--	--	4,860	121	1,280	447	15	120	(4)	--	--
Canada	23,500	1,400	10,800	17,300	1,440	12,200	3,290	190	2,710	18,300	2,470	18,100
China	70,800	8,120	40,000	392	56	532	249	21	125	10,100	(4)	984
Germany	--	--	--	576	96	752	215	41	134	14	--	2
Hong Kong	--	--	--	--	--	--	1,110	102	359	1	--	(4)
India	1	--	--	(4)	--	25	730	20	382	15	1	6
Italy	--	1	1	73	--	10	325	41	173	14	--	20
Japan	1,540	--	48	189	--	96	80	--	16	16	--	11
Korea, Republic of	99	--	2,150	397	113	448	1,780	118	815	2,460	451	1,960
Mexico	141,000	6,420	78,100	99	--	4	102	3	65	62,600	8,380	57,600
Singapore	--	--	--	--	--	--	40	3	29	5	--	(4)
Spain	--	--	--	124	--	210	121	--	61	1	--	(4)
Switzerland	--	--	--	--	--	--	31	3	14	5	--	4
Taiwan	--	--	--	146	--	--	122	--	20	19	--	12
Vietnam	--	--	--	--	--	--	--	--	--	503	--	1
Other	137	8	52	1,090	298	807	1,040	117	444	142	25	241
Total	237,000	15,900	131,000	25,200	2,120	16,400	9,690	673	5,470	94,200	11,300	79,000

-- Zero.

¹Data are rounded to no more than three significant digits; may not add to totals shown.

²Copper ore and concentrates only; excludes copper contained in ore and concentrates of other metals.

³Copper matte, ash, and precipitates only; excludes the copper content of mattes and ashes of other metals.

⁴Less than ½ unit.

Source: U.S. Census Bureau.

TABLE 15
U.S. IMPORTS FOR CONSUMPTION OF COPPER SCRAP¹

(Metric tons, gross weight)

Country or locality	Unalloyed			Alloyed		
	2018			2018		
	2017	July	January– July	2017	July	January– July
Canada	18,900	1,570	10,000	81,900	5,880	44,200
Chile	57	37	158	301	55	129
Colombia	598	110	307	1,360	69	609
Costa Rica	636	25	319	1,060	96	456
Guatemala	36	24	85	446	57	300
Honduras	61	--	1	352	44	264
Mexico	10,400	993	6,320	35,300	3,440	21,600
Nicaragua	38	--	19	321	40	225
Pakistan	694	--	491	--	--	--
Panama	1,440	82	818	790	51	411
Venezuela	958	221	2,000	1,870	11	468
Other	1,720	149	1,040	6,190	604	3,740
Total	35,500	3,210	21,600	130,000	10,300	72,500

-- Zero.

¹Data are rounded to no more than three significant digits; may not add to totals shown.

Source: U.S. Census Bureau.

TABLE 16
U.S. EXPORTS OF COPPER SCRAP¹

(Metric tons, gross weight)

Country or locality	Unalloyed							Alloyed					
	2018							2018					
	2017	No. 1		No. 2		Other		2017	Segregated		Unsegregated		
		July	January– July	July	January– July	July	January– July		July	January– July	July	January– July	
Belgium	7,870	485	2,840	752	3,920	467	1,800	8,560	79	326	989	4,800	
Canada	43,800	--	--	--	--	4,260	30,800	49,700	--	--	2,350	18,500	
China	352,000	4,840	58,400	6,550	56,200	6,660	54,500	336,000	4,000	31,800	2,690	38,800	
Germany	19,700	1,220	9,060	98	2,680	185	886	10,900	349	2,160	995	6,020	
Hong Kong	5,580	305	2,690	145	658	517	4,690	30,800	410	4,270	1,470	10,100	
India	4,810	698	4,000	414	1,790	244	1,200	20,100	2,040	8,950	814	3,320	
Japan	11,800	396	1,760	1,160	7,470	115	2,050	9,300	69	837	996	9,190	
Korea, Republic of	17,200	1,800	11,900	708	2,780	866	4,130	14,100	406	4,300	1,350	5,810	
Mexico	3,500	439	2,590	1	5	2	41	507	--	30	96	461	
Netherlands	7,260	266	2,440	39	198	178	2,360	1,120	--	119	78	932	
Pakistan	3,790	94	352	49	318	--	2	5,780	--	126	1,380	5,250	
Spain	1,220	16	217	25	153	20	79	6,280	98	1,430	633	4,120	
Taiwan	5,750	427	3,480	348	800	361	2,220	2,900	220	894	1,250	6,360	
Thailand	204	--	982	--	380	18	1,430	472	101	502	435	9,260	
Other	9,690	1,650	9,000	1,290	7,560	3,700	16,000	13,600	1,770	11,300	4,650	21,900	
Total	494,000	12,600	110,000	11,600	84,900	17,600	122,000	510,000	9,540	67,000	20,200	145,000	

-- Zero.

¹Data are rounded to no more than three significant digits; may not add to totals shown.

Source: U.S. Census Bureau.