

Bird Banding Laboratory

Bandit 4.0 Frequently Asked Questions

Q I am trying to install the Bandit desktop application and I get a message reading there is an error opening registrykey, access denied, or Bandit is installed, and it will not save my changes. How do I proceed?

A You will need administrative access to install and write to the files in Bandit. Contact your IT support staff.

Q I get the messages '360 Works requires 32-bit version of Java or later' and then 'FTP registration failed'.

A To connect to the FTP site, and automatically send data submission files from Bandit, you will need an internet connection, and the latest version of Java on your computer. To check for Java updates, please go to:

java.com/en/download/help/java_update.xml

Q Did the Bird Banding Lab receive my data submission file?

A If you are unsure whether Bandit sent your data to the BBL, or if you did not receive a confirmation email, please manually send the submission file which will be found in the Documents folder on your computer. The file name is structured like this:

Bandit_Submission_22281_201804141042.tab

Please email submission files to bandit@usgs.gov. In the subject line, include your permit number. In the body of the email, state that you are unsure whether the file was sent and attach the tab file.

Q Can I create user-defined fields in Bandit?

A Yes, see documentation in Chapter 3.5 of the [Bandit User Guide](#) (User Fields) for details.

Q The Record Status has changed from **S** (Submitted) to **M** (Modified), and I don't intend to resubmit the record(s).

A You can manage and update the Record Status column. When Bandit is upgraded or restored from a backup file, you will notice that record status for previously submitted records has reverted to modified (yellow **M**). If a Location is edited, the corresponding banding records will also change from **S** to **M**. To prevent the records from being submitted as modified, you will need to mark these records as already submitted (gray **S**).

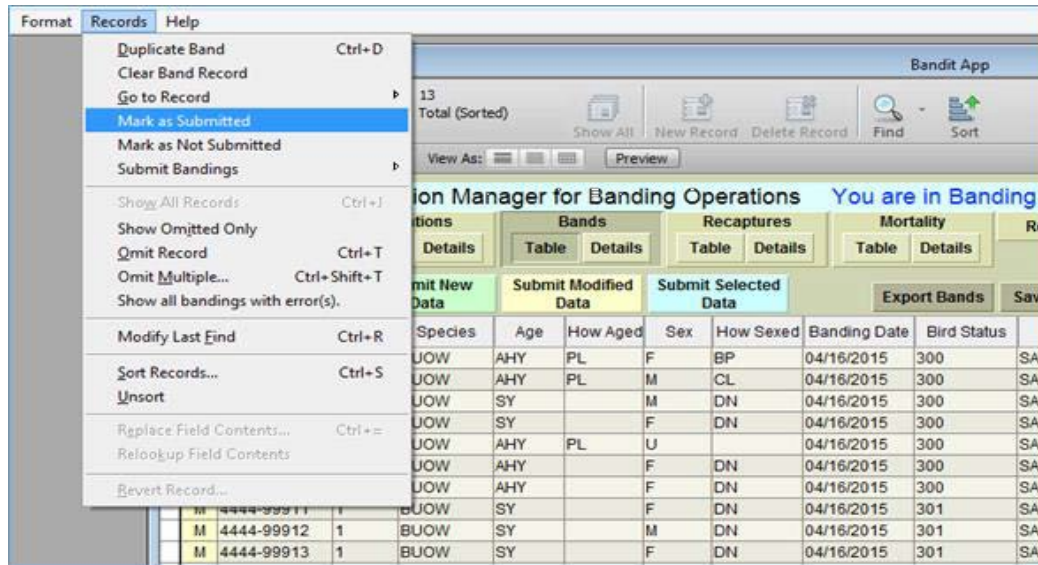
To do this:

1) Go to the Bands or Recaptures table. At the top of the screen, hit the 'Show All' button to work with the full set.

2) Click on the 'Find' magnifying glass in the top center of the screen. An empty row should appear. In the Record Status cell (leftmost cell), type an **M** for Modified. Click on the 'Perform Find' magnifying glass. Check the green pie chart to be sure you are working on just the subset '**M**'.

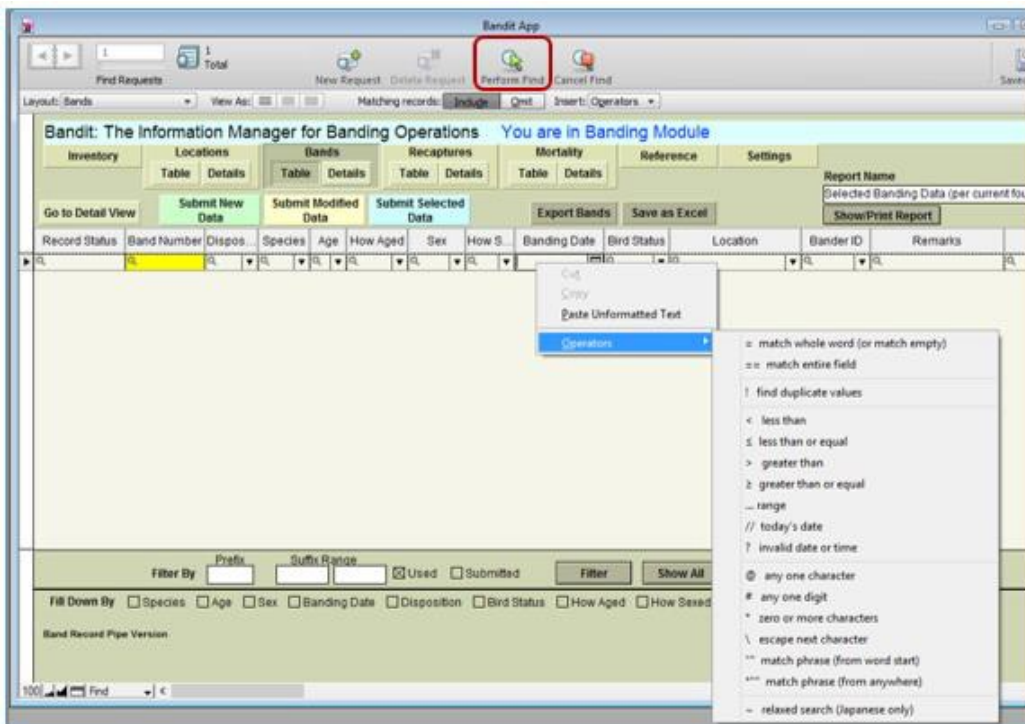
3) In the narrow gray menu at the top of the screen, select Records > Mark as Submitted. The **M**s should change to gray **S**.

4) Click on the 'Show All' button again to return to the full set of records.



Q How can I filter on fields other than band number?

A Use the Find function. Either press the 'Control' and 'F' keys simultaneously, or click on the small magnifying glass icon labeled 'Find' at the top center of the screen. Either will return an empty record on which you can fill in a value in any number of fields. After doing so, click the 'Perform Find' magnifying glass icon at the top center. Only records with the values you requested will show. You can click 'Show All' to get back to the full database. While you are in Findmode, you can right-click in any cell, and the word 'Operators' with a drop-down appears. This lists the various operators you can use with a search. For example, if you want all birds banded in 2017, in the Banding Date field, type 2017. For more on the Find mode, see Chapter 11.



Q Is there a way to copy identical data from one record to the next?

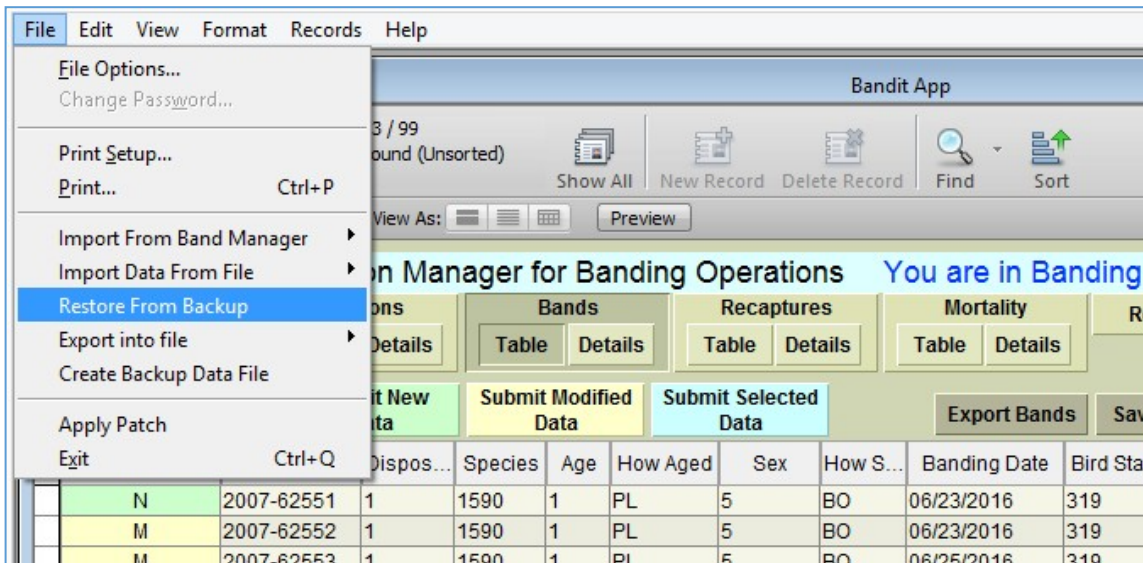
A Yes, to duplicate an entire line of data, make sure you have clicked any box in the line to be repeated. Hold the control key down while hitting the letter 'D'. This will copy all of the data (all fields) from this line to the next line. If you only want to copy data from one field to the next line, click in that field on the line below the data you want to copy and hold the control key down while hitting the apostrophe(') key. This will copy the data from the line above for that field only.

Q How do I restore from a Bandit backup file?

A If you need to return back to the point when backup file was created, here are steps to restoring Bandit from a backup file:

1. Open Bandit.
2. In the menu go to File > Restore From Backup.
3. Choose the backup file you want to go back to.

Each Bandit session will create a backup file if you click OK when it first comes up. Each time you open and close the program and click OK, it will create a backup file. The backup file saves everything (old and new); file name has the date and time so you can easily find it. The file is not overwritten just in case a problem occurs with your computer or the Bandit program and you need to back up to a previous session that you know was ok.



Q I chose ALPHA for entering data but used Numeric Codes. I am now getting an error message. Can I correct this by re-choosing NUMERIC?

A Yes.

Q How do I import banding data with bands that have a 3-digit prefix?

A Make sure the file you are importing has leading zeroes. In Excel, you must put an apostrophe in front of the number for the leading zero to stay.

Q If I am importing a file from another program, must I have a dash in the band numbers?

A No, Bandit will take the band number with or without dashes. Also, in your import file, be sure to include a field for Disposition code. For more on importing, see Chapter 14.2 of the [user guide](#).

Q When I download the Mac version, my computer says it doesn't recognize the file 'Bandit_1.0.bin', how do I proceed?

A You need to either change the extension to .dmg, or open it with 'Disc Utility'

Q I have gotten a message that a file is corrupted. How do I recover it?

A To recover a damaged file:

On Windows machines, press Ctrl+Shift while double-clicking the Bandit icon on your desktop. Hold the keys down until you see the 'Open Damaged File' dialog box.

On Mac OS X machines, press Option + command while double-clicking the Bandit icon on your desktop. Hold the keys down until you see the 'Open Damaged File' dialog box.

During the recovery process, Bandit:

1. Creates a new file.
2. Renames any damaged files by adding 'Old' to the end of the filenames (for example, 'Bandit Data.BND' is renamed to 'Bandit Data Old.BND').
3. Gives the (new) repaired file the original name(Bandit Data.BND).

If you experience unusual behavior in the recovered files, you should revert to a backup copy (explained here) that was made before the file became corrupt, or contact Help for technical assistance.

For additional assistance, please contact the Bandit Help Desk at bandithelp@usgs.gov or call 301-497-5566.