

The Pan American Institute of Geography and History (PAIGH)

North America National Mapping Meeting

May 10, 2018

89 Aniversario
1928-2017

Secretaría General



INSTITUTO PANAMERICANO DE GEOGRAFÍA E HISTORIA
Organismo Especializado de la Organización de los Estados Americanos - OEA

"Una institución interamericana dispuesta, desde sus ciencias afines, a repensar América en el siglo XXI"



Pan American Institute of Geography and History (PAIGH)

PAIGH was founded in 1928 and their Headquarters have been in Mexico City since 1930

For 90 years, the organization has promoted collaboration throughout the Americas by sponsoring conferences, publishing journals, and organizing workshops

Mission: An international, scientific and technical organization of the Organization of American States, dedicated to the generation and transfer of specialized knowledge in the areas of Cartography, Geography, Geophysics and History

Vision: To be the Pan American point of reference in the areas of Cartography, Geography, Geophysics, and History

Objective: Encourage, coordinate, and disseminate knowledge in these disciplines



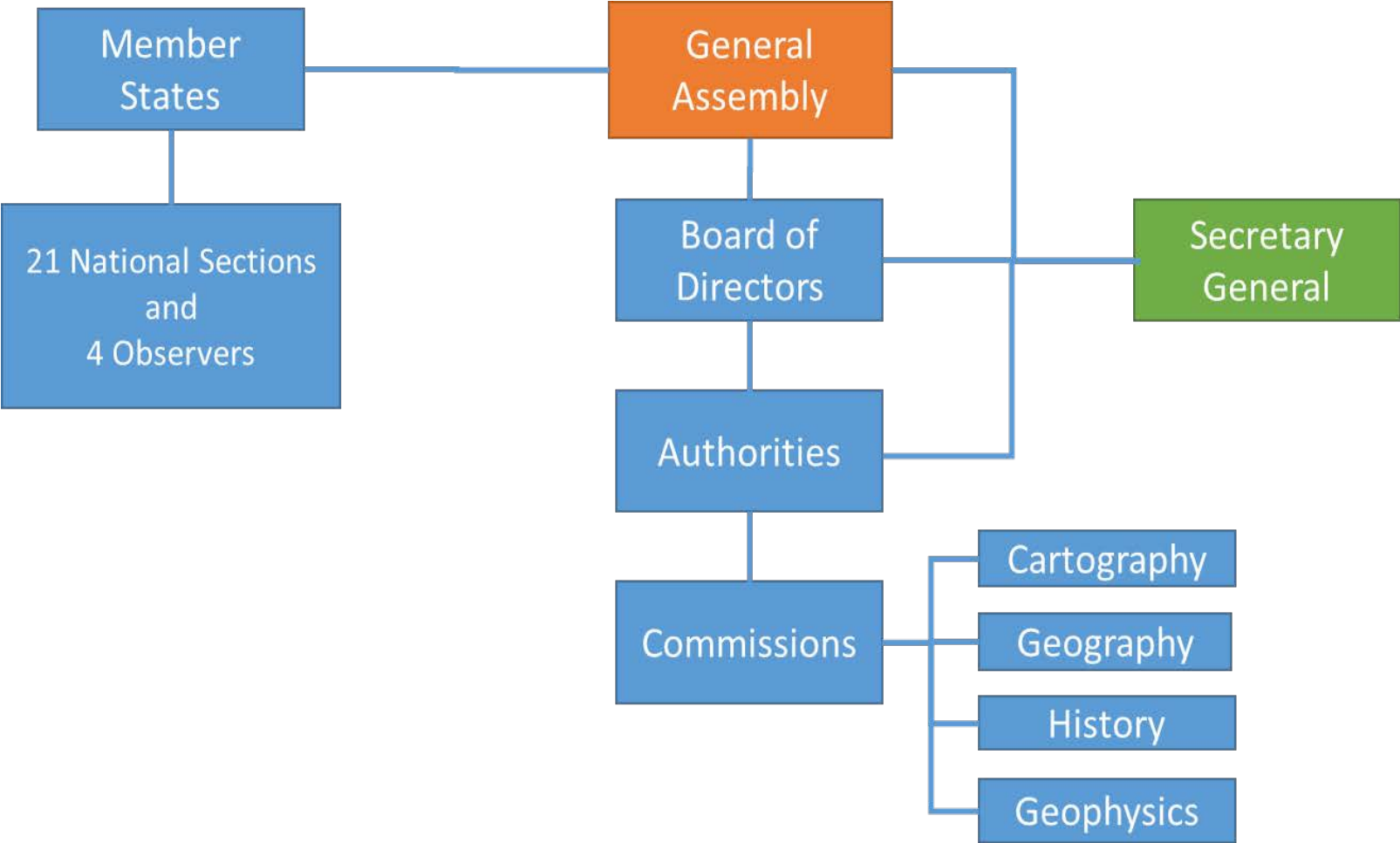
PAIGH Objectives in Detail

- To encourage, coordinate, and publicize, cartographical, geophysical, geographical, and historical studies, as well as other related scientific studies of interest to the Americas
- To promote and carry out studies, work and training in the aforementioned fields of activity
- To promote cooperation among organizations interested in these fields of activity in the Americas, and with related international organizations

www.ipgh.org



PAIGH Organizational Structure



PAIGH Member States and Observing Countries

Estados Miembros del IPGH



Argentina



Belize



Bolivia



Brasil



Chile



Colombia



Costa Rica



Ecuador



El Salvador



Estados Unidos de América



Guatemala



Haití



Honduras



México



Nicaragua



Panamá



Paraguay



Perú



República Dominicana



Uruguay



Venezuela

Países Observadores Permanentes



España



Israel



Jamaica



Francia



PAIGH – U.S. National Section

- The mission of the U.S. National Section is established by the Organic Statutes of PAIGH and is authorized by the U.S. Department of State and its mission to the Organization of American States
- The members of the U.S. National Section include representatives from federal agencies, state governments, private businesses, non-profit organizations, and academia from across the U.S.



- The U.S National Section consist of four commissions: Cartography, Geography, Geophysics, and History
- Monthly meetings to collaborate and ensure progress towards the PAIGH agenda



Furthering the PAIGH Agenda

- Pan American Agenda for the United Nations 2030 Agenda for Sustainable Development

PAIGH has defined a strategic policy as a way to contribute, according to its viewpoint, to the objectives of comprehensive and sustainable development in the region. Given the United Nations defined a Sustainable Development Agenda for 2030, through which 17 objectives for sustainable development were established, it is considered a priority for the PAIGH Commissions to take the relevant actions for adapting their work plans in order to fulfill the Pan American Agenda of PAIGH in alignment with the United Nations 2030 Agenda for Sustainable Development

- Joint Action Plan to Expedite Development of Spatial Data Infrastructure of the Americas

The joint action plan, signed between PAIGH, SIRGAS (Geo-centric reference system of the Americas), UN-GGIM Americas and the GeoSUR program of the Latin America Development Banks (CAF), has as its main purpose the harmonization of their efforts and their work plans, improving their specializations, preventing duplicated efforts and preparing the relevant institutions for the continual technological changes and innovations that arise in this field of development

- GeoSUR Program

This is a program that integrates the institutions that produce geospatial information in Latin America and the Caribbean with the goal of implementing a regional geospatial network and of aiding to establish the basis of a spatial data infrastructure in the region

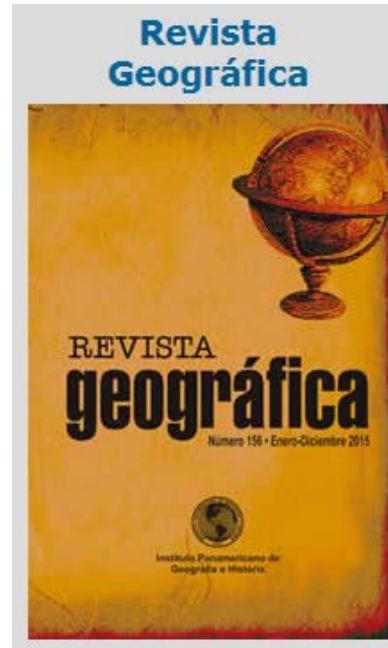
- Cooperation with the IGN of Spain

The IGN of Spain and PAIGH, being members of the Iberian-American network of geographic information infrastructures, have encouraged and supported the training of technicians through courses and the projects that enable the specialized technicians of the countries that are members of the Pan American Network to improve their knowledge



PAIGH Publications

- There are seven formal publications:
 - Revista Cartográfica
 - Revista Geográfica
 - Revista Geofísica
 - Revista de Historia de América
 - Boletín de Antropología Americana
 - Revista de Arqueología Americana
- Atlases, Guides, Manuals, Charts, Glossaries, etc.



PAIGH Technical Projects

- Integrated Map of Central America (MIAC)
- Integrated Maps of South America (MIAN, MIAS)
- Working group of online courses to enhance collaboration among geographers in the Americas
- Amazon Transboundary Project
- Mapping and analysis of Volcanic Activity in the Coatepeque Region of El Salvador
- Proposed technical project for 2019: The Integration of Statistical and Geospatial Information in Central America

The purpose of this project is to conduct a series of workshops focused on building on the geospatial work completed by PAIGH on the integrated maps of the Americas, regional efforts of the United Nations Committee of Experts on Global Geospatial Information Management Americas and United Nations Economic Commission for Latin America and the Caribbean on the Geospatial Statistical Framework for the Americas and the Caribbean (MEGA by its Spanish acronym), the national efforts of the United Nations Statistics Division, United Nations Committee of Experts on Global Geospatial Information Management and the United Nations Expert Group on the Integration of Statistical and Geospatial Information, to add value and further the knowledge on the integration of statistical and geospatial information

The project proposes working with the seven Central American countries, Belize, Costa Rica, El Salvador, Guatemala, Honduras, Nicaragua, and Panama, and partner countries Mexico and the United States

This will be a collaborative effort between the U.S. National Section of PAIGH and the UN-GGIM Americas



Contact US

- IPGH: <https://ipgh.org/>
- USNS @ AAG: <http://www.aag.org/cs/paigh/members>
- Deirdre Dalpiaz Bishop
Chief, Geography Division
President, U.S. National Section of PAIGH
U.S. Census Bureau
301.763.1696
deirdre.dalpiaz.bishop@census.gov

