

Mineral Industry Surveys

For information, contact:

Amy C. Tolcin, Zinc Commodity Specialist (Acting)
 National Minerals Information Center
 U.S. Geological Survey
 989 National Center
 Reston, VA 20192
 Telephone: (703) 648-4940 Fax: (703) 648-7757
 Email: atolcin@usgs.gov

Hodan A. Fatah (Data)
 Telephone: (703) 648-4971
 Fax: (703) 648-7975
 Email: hfatah@usgs.gov

Internet: <https://www.usgs.gov/centers/nmic>

ZINC IN SEPTEMBER 2019

Domestic mine production (recoverable) of zinc in September 2019 was 66,100 metric tons (t) (tables 1, 2). Average daily mine production in September was 2,200 t, 5% higher than that in the previous month but 4% lower than that in September 2018 (fig. 1).

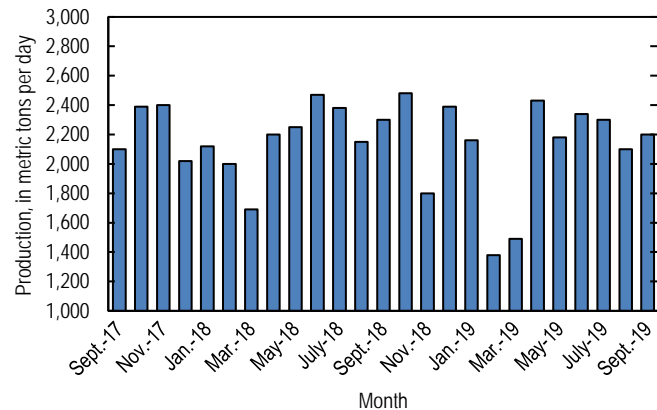


Figure 1. Average daily domestic zinc mine production (recoverable) from September 2017 through September 2019.

Stocks and Prices

Global London Metal Exchange Ltd. (LME) stocks of Special High Grade (SHG) zinc were 66,750 t at the end of September 2019, essentially unchanged from stocks at the end of August and 67% lower than stocks at the end of September 2018 (fig. 2, table 7).

The monthly average Platts Metals Week North American SHG zinc price in September 2019 was \$1.14 per pound, slightly higher than that in the previous month but 4% lower than that in September 2018. The September 2019 average LME cash price for SHG zinc was \$2,319.16 per metric ton (\$1.05 per pound), slightly more than that in August but 5% lower than that in September 2018 (fig. 3, table 6).

The North American premium to the LME cash price in September 2019 averaged 8.7 cents per pound, 6% more than that in the previous month and 4% more than that in September 2018 (fig. 3, table 6).

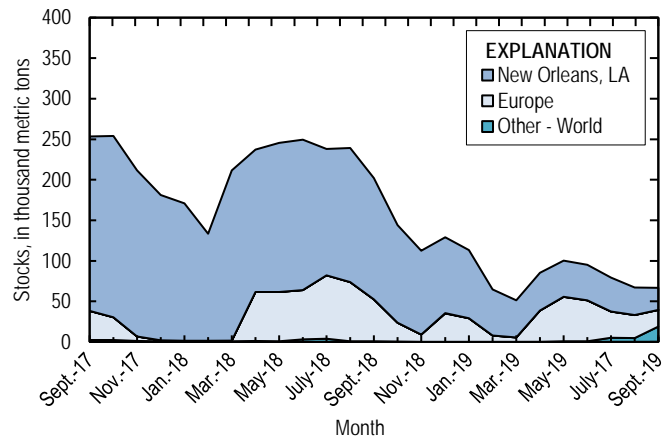


Figure 2. Global LME stocks of Special High Grade zinc, monthend, from September 2017 through September 2019. Source: London Metal Exchange Ltd.

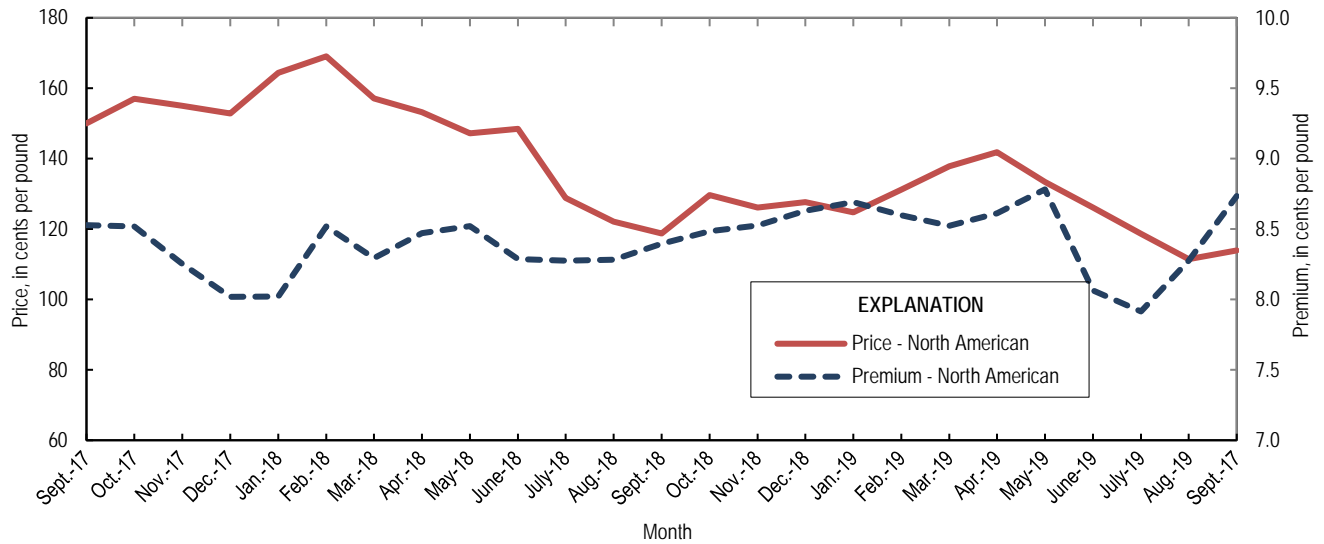


Figure 3. Average monthly North American price and premium for Special High Grade zinc from September 2017 through September 2019. Source: Platts Metals Week.

List services and web feed subscribers are the first to receive notification of USGS minerals information publications and data releases. For information on how to subscribe, go to <https://www.usgs.gov/centers/nmic/minerals-information-publication-list-services>.

TABLE 1
SALIENT ZINC STATISTICS¹

(Metric tons, unless otherwise specified)

	2018	2019		
	January– December ^p	August	September	January– September ²
Production:				
Mine, zinc content of concentrate ³	824,000	67,100 ^r	68,100	582,000
Mine, recoverable zinc ³	799,000	65,100 ^r	66,100	565,000
Smelter, refined zinc ^e	116,000	9,900 ^r	9,900	85,000
Consumption of refined zinc, apparent ⁴	868,000	72,800 ^r	91,100	703,000
Imports for consumption:				
Ore and concentrate (zinc content)	32	--	--	10
Refined zinc	775,000	63,100	81,500	622,000
Exports:				
Ore and concentrate (zinc content)	806,000	195,000	128,000	744,000
Refined zinc	23,300	253	251	4,220
Price:⁵				
London Metal Exchange cash, average, dollars per metric ton	2,924.55	2,274.60	2,319.16	2,603.64
Platts Metals Week North American, average, cents per pound	141.05	111.45	113.93	126.57

^cEstimated. ^pPreliminary. ^rRevised. -- Zero.

¹Data are rounded to no more than three significant digits, except prices; may not add to totals shown.

²May include revisions to previously published data.

³Reported zinc content in both zinc and lead concentrates.

⁴Smelter production plus imports for consumption minus domestic exports.

⁵Special High Grade Zinc.

TABLE 2
MINE AND SMELTER PRODUCTION OF ZINC
IN THE UNITED STATES¹

(Metric tons)

Period	Mine ²		Smelter ^e
	Zinc content	Recoverable	
2018:			
September	70,000	68,900	9,920
October	79,600	77,000	11,900
November	55,700	53,900	11,900
December	76,700	74,200	11,900
January–December	824,000	799,000	116,000
2019:			
January	68,900	66,900	8,600
February	39,800	38,600	8,600
March	47,600	46,100	8,600
April	75,300	73,000	9,900 ^r
May	69,500	67,500	9,900 ^r
June	71,800	70,300	9,900 ^r
July	73,500 ^r	71,400 ^r	9,900 ^r
August	67,100 ^r	65,100 ^r	9,900 ^r
September	68,100	66,100	9,900
January–September	582,000	565,000	85,000

^eEstimated. ^rRevised.

¹Data are rounded to no more than three significant digits; may not add to totals shown.

²Includes the zinc content in both lead and zinc concentrates.

TABLE 3
U.S. IMPORTS FOR CONSUMPTION OF ZINC¹

(Gross weight, unless otherwise specified)

Material	2018		2019			
	Quantity (metric tons)	Value (thousands)	September		January–September ²	
			Quantity (metric tons)	Value (thousands)	Quantity (metric tons)	Value (thousands)
Ore and concentrate (zinc content)	32	\$23	--	--	10	\$7
Unwrought:						
Refined zinc	775,000	2,350,000	81,500	\$196,000	622,000	1,680,000
Zinc alloys	4,390	14,300	1	23	1,400	4,090,000
Wrought:						
Bars, rods, profiles, wire	3,470	13,900	243	684	2,200	7,840
Plates, sheets, strip, foil	5,410	16,400	108	579	2,260	9,470
Ash and residues:						
Hard zinc spelter	19	31	20	17	20	17
Zinc dross and skimmings	4,300	8,200	333	503	2,830	4,520
Other (zinc content)	1,250	823	--	--	1,210	723
Other:						
Powders, flakes, dust	26,600	106,000	1,840	6,590	19,400	73,000
Waste and scrap	12,900	22,000	1,180	1,480	7,650	13,900
Chemicals:						
Lithopone	272	822	47	131	927	3,230
Zinc oxide	115,000	334,000	8,420	21,400	74,800	209,000
Zinc chloride	208	1,840	16	129	106	1,010
Zinc sulfate	98,800	106,000	7,220	5,890	52,300	48,700
Zinc sulfide	2,730	10,400	95	508	787	2,760

-- Zero.

¹Data are rounded to no more than three significant digits.

²May include revisions to previously published data.

Source: U.S. Census Bureau.

TABLE 4
U.S. IMPORTS OF ZINC, BY TYPE OF MATERIAL AND COUNTRY OR LOCALITY¹

(Metric tons, gross weight, unless otherwise specified)

Material and country or locality	General imports			Imports for consumption		
	2018	2019		2018	2019	
		September	January–September ²		September	January–September ²
Ore and concentrate (zinc content):						
Canada	(3)	--	10	(3)	--	10
China	32	--	--	32	--	--
Total	32	--	10	32	--	10
Refined zinc:						
Australia	--	--	--	676	--	--
Belgium	--	--	--	4,340	100	219
Brazil	601	1,500	4,710	601	1,500	4,710
Canada	524,000	40,200	398,000	524,000	40,200	398,000
China	22	34	49	5,380	34	2,690
India	2,840	--	--	2,840	--	--
Korea, Republic of	--	--	--	6,810	--	174
Mexico	101,000	13,300	104,000	101,000	13,300	104,000
Namibia	--	--	--	122	--	--
Netherlands	--	--	--	6,040	55	1,430
Peru	46,300	3,300	42,400	46,300	3,300	42,400
Poland	641	--	268	641	--	268
South Africa	5,480	--	--	--	--	--
Spain	20,000	13,100	14,500	76,100	22,900	67,700
Taiwan	36	--	56	36	--	56
Other	3	--	6	3	--	6
Total	701,000	71,500	564,000	775,000	81,500	622,000
Oxide:						
Australia	127	33	213	127	33	213
Belgium	6	--	29	6	--	29
Brazil	127	--	5	127	--	5
Canada	51,200	3,870	33,600	51,200	3,870	33,600
China	422	4	100	422	4	100
El Salvador	--	--	20	--	--	20
France	16	--	12	16	--	12
Germany	1,150	118	1,050	1,150	118	1,050
Greece	120	20	220	120	20	220
Hong Kong	58	--	5	58	--	5
India	119	--	64	119	--	64
Italy	19	--	22	19	--	22
Japan	776	37	743	776	37	743
Korea, Republic of	76	19	72	76	19	72
Mexico	49,800	3,220	28,800	49,800	3,220	28,800
Netherlands	8,400	786	7,100	8,400	786	7,100
Peru	2,540	302	2,260	2,540	302	2,260
Philippines	46	--	--	46	--	--
Russia	--	--	20	--	--	20
United Kingdom	105	19	399	105	19	399
Other	59	--	1	59	--	1
Total	115,000	8,420	74,800	115,000	8,420	74,800

-- Zero.

¹Data are rounded to no more than three significant digits; may not add to totals shown.

²May include revisions to previously published data.

³Less than ½ unit.

Source: U.S. Census Bureau.

TABLE 5
U.S. EXPORTS OF ZINC¹

(Gross weight, unless otherwise specified)

Material	2018		2019			
	Quantity (metric tons)	Value (thousands)	September		January–September ²	
			Quantity (metric tons)	Value (thousands)	Quantity (metric tons)	Value (thousands)
Ore and concentrate (zinc content)	806,000	\$1,530,000	128,000	\$226,000	744,000	\$1,210,000
Unwrought:						
Refined zinc	23,300	58,000	251	789	4,220	11,400
Zinc alloys	21,800	67,200	1,500	4,260	16,300	48,600
Wrought:						
Bars, rods, profiles, wire	10,600	30,600	816	2,170	7,660	22,500
Plates, sheets, strip, foil	7,170	29,900	549	2,260	4,810	18,700
Ash and residues:						
Hard zinc spelter	8,300	16,200	684	1,090	6,710	12,900
Other (zinc content)	23,900	43,000	1,930	2,490	18,800	29,900
Other:						
Powders, flakes, dust	13,500	56,600	751	2,790	10,900	39,300
Waste and scrap	40,400	49,800	2,770	3,580	24,300	31,900
Chemicals:						
Lithopone	179	1,280	16	76	124	670
Zinc oxide	60,200	91,800	496	1,160	7,680	20,100
Zinc chloride	281	440	8	15	166	271
Zinc sulfate	1,000	879	29	45	446	597
Zinc sulfide	1,730	15,900	152	1,030	1,560	13,200

¹Data are rounded to no more than three significant digits.

²May include revisions to previously published data.

Source: U.S. Census Bureau.

TABLE 6
AVERAGE PRICES FOR SPECIAL HIGH GRADE ZINC

Period	North	London Metal Exchange	
	American ¹	cash ²	
	¢/lb.	¢/lb.	\$/t
2018:			
September	118.74	110.35	2,432.71
October	129.65	121.17	2,671.26
November	126.11	117.58	2,592.28
December	127.69	119.06	2,624.87
January–December	141.05	132.66	2,924.55
2019:			
January	124.74	116.05	2,558.49
February	131.17	122.58	2,702.34
March	137.84	129.32	2,850.91
April	141.88	133.26	2,937.96
May	133.37	124.59	2,746.79
June	126.07	118.01	2,601.56
July	118.64	110.72	2,440.96
August	111.45	103.17	2,274.60
September	113.93	105.20	2,319.16
January–September	126.57	118.10	2,603.64

¹Platts Metals Week North American price. Based on the London Metal Exchange cash price plus premium.

²Average of the cash buyer price and the cash seller and settlement price.

Source: Platts Metals Week.

TABLE 7
LONDON METAL EXCHANGE (LME) STOCKS OF SPECIAL HIGH GRADE ZINC, END OF PERIOD

(Metric tons)

Period	United States			Europe	Other	Total LME
	Chicago, IL	New Orleans, LA	Total			
2018:						
September	--	149,350	149,350	51,900	675	201,925
October	--	120,400	120,400	23,525	250	144,175
November	--	103,575	103,575	8,975	25	112,575
December	350	93,625	93,975	35,000	25	129,000
2019:						
January	25	84,000	84,025	29,150	25	113,200
February	--	56,625	56,625	7,900	25	64,550
March	--	45,900	45,900	5,350	25	51,275
April	--	46,475	46,475	38,575	--	85,050
May	--	44,900	44,900	54,900	575	100,375
June	--	43,825	43,825	50,500	800	95,125
July	--	41,925	41,925	32,325	5,100	79,350
August	--	33,875	33,875	28,375	4,725	66,975
September	--	27,175	27,175	20,725	18,850	66,750

-- Zero.

Source: London Metal Exchange, Ltd.