

Mineral Industry Surveys

For information, contact:

Daniel M. Flanagan, Copper Commodity Specialist
 National Minerals Information Center
 U.S. Geological Survey
 989 National Center
 Reston, VA 20192
 Telephone: (703) 648-7726, Fax: (703) 648-7757
 Email: dflanagan@usgs.gov

Sheema Merchant (Data)
 Telephone: (703) 659-9944
 Fax: (703) 648-7975
 Email: smerchant@usgs.gov

Internet: <https://www.usgs.gov/centers/nmic>

COPPER IN AUGUST 2019

In August 2019, mine production of recoverable copper in the United States was 114,000 metric tons (t). The average daily mine production was 3,690 t, a slight decrease from that in July and 6% higher than that in August 2018 (fig. 1). Year-to-date recoverable mine output through August 2019 was 847,000 t, an increase of 4% relative to the same period in 2018 (table 2).

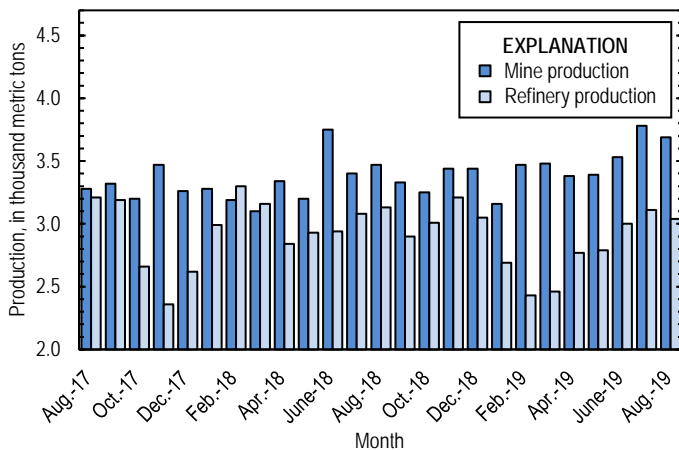


Figure 1. Average daily U.S. copper mine (recoverable) and refinery production from August 2017 through August 2019.

Smelter production in August 2019 was 49,200 t. The average daily smelter output was 1,590 t, 43% more than that in July and an increase of 7% compared with the daily average in August 2018. Year-to-date output through August 2019 was 312,000 t, 14% lower than that through August 2018 (table 3).

Total domestic refinery production was 94,100 t in August 2019; data for electrolytic and electrowon output, as well as refined production from scrap, are in table 4. The average daily refinery production was 3,040 t, slightly less than that in July and 3% lower than that in August 2018 (fig. 1). Year-to-date refinery production through August 2019 was 678,000 t, a decrease of 8% relative to the same period in 2018 (table 4).

Prices

The average August 2019 COMEX spot copper price was \$2.57 per pound, a decrease of 4% from \$2.69 per pound, the price in July 2019 and August 2018 (fig. 2, table 11). The average price of New York dealers' number 2 scrap in August 2019 was \$1.82 per pound, slightly less than \$1.86 per pound in July and a decline of 3% from \$1.88 per pound in August 2018 (fig. 2, table 12).

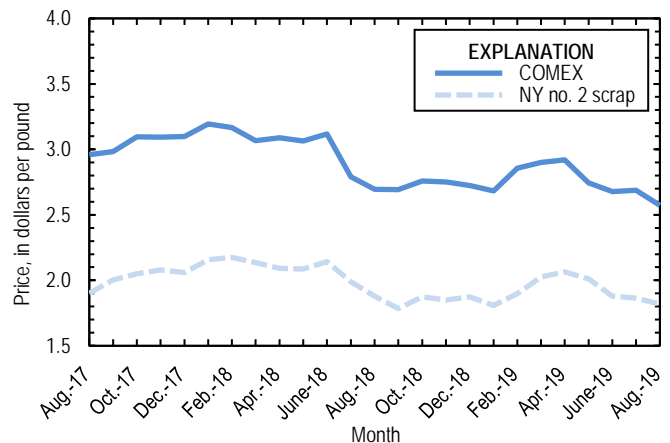


Figure 2. Monthly average COMEX copper price and New York no. 2 copper scrap price from August 2017 through August 2019. Sources: American Metal Market, Platts Metals Week.

Stocks

Refined copper stocks in the United States rose for the second consecutive month and totaled 119,000 t at the end of August 2019, a slight increase compared with those in July and 66% less than those in August 2018. Wire-rod stocks fell by 38%, COMEX stocks increased by 11%, and London Metal Exchange Ltd. stocks in U.S. warehouses were 17% higher compared with those at the end of July (fig. 3, table 10). Copper traders in the United States reported weak demand owing to low automotive sales and slowing activity in the construction and housing industries (Bera, 2019).

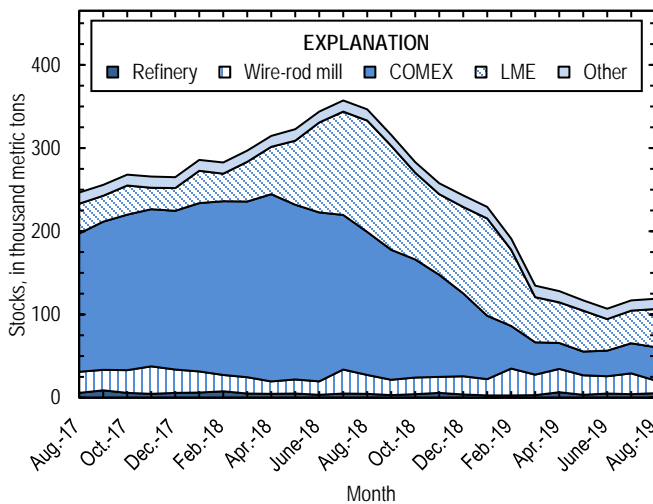


Figure 3. Monthly domestic refined copper stocks, by type, from August 2017 through August 2019. Sources: American Metal Market, London Metal Exchange Ltd., and U.S. Geological Survey.

Industry News

Chile.—Corporación Nacional del Cobre de Chile (Codelco) began underground operations at the Chuquicamata Mine on August 14. Codelco expected the expansion to produce 320,000 t of copper per year by 2026 and to extend the mine life by 40 years. Open pit mining at the site, ongoing since 1915, was anticipated to cease in 2020. The Chuquicamata Mine produced 321,000 t of copper in 2018 and was one of the leading global copper operations (Corporación Nacional del Cobre de Chile, 2019, p. 28; Rostás, 2019).

Congo (Kinshasa).—Glencore plc (Switzerland) announced that it would place the Mutanda copper-cobalt mine on care and maintenance at yearend 2019 owing to low cobalt prices. In the first half of 2019, output from the Mutanda Mine was 53,700 t of copper, a decrease of 47% from 102,000 t during the first half of the prior year. The operation accounted for about 17% of mined copper capacity in Congo (Kinshasa) in 2018 (Decena,

2019; Glencore plc, 2019, p. 11; International Copper Study Group, 2019, p. 84, 90).

Peru.—Copper export shipments from the port of Matarani resumed on August 10 following a three-week blockade by protestors objecting to the issuance of a construction permit for Southern Copper Corp.’s (Phoenix, AZ) Tia Maria project. The protests, which halted shipments from four copper mines that account for about half of Peru’s copper output, ended after the Government of Peru suspended the permit for further evaluation (Aquino, 2019).

References Cited

- Aquino, Marco, 2019, Update 1—Copper exports resume from Peruvian port of Matarani—Port operator: Reuters, August 13. (Accessed January 16, 2020, at <https://www.reuters.com/article/peru-copper/update-1-copper-exports-resume-from-peruvian-port-of-matarani-port-operator-idU5L2N2590TZ>.)
- Bera, R.D., 2019, Global Cu—Shanghai, US premiums down: American Metal Market, August 21. (Accessed August 23, 2019, via <https://www.amm.com/>.)
- Corporación Nacional del Cobre de Chile, 2019, Memoria anual 2018 [Annual report 2018]: Santiago, Chile, Corporación Nacional del Cobre de Chile, 295 p. (Accessed January 16, 2020, at https://www.codelco.com/memoria2018/site/docs/20190405/20190405152423/memoria_anual_codelco_2018.pdf.)
- Decena, Karl, 2019, Report—Glencore to shut down Mutanda copper-cobalt mine in DRC: S&P Global Market Intelligence, August 6. (Accessed August 9, 2019, via <https://www.snl.com/>.)
- Glencore plc, 2019, 2019 half-year production report: Baar, Switzerland, Glencore plc news release, July 31, 18 p. (Accessed January 16, 2020, at https://www.glencore.com/dam/jcr:9a598e35-657b-4489-a445-dc221706c20d/GLEN_2019-HY_ProductionReport.pdf.)
- International Copper Study Group, 2019, ICSG directory of copper mines and plants up to 2023: Lisbon, Portugal, International Copper Study Group, July, 219 p. (Accessed August 10, 2019, via <http://www.icsg.org/>.)
- Rostás, Renato, 2019, Codelco starts underground phase at Cu mine: American Metal Market, August 15. (Accessed August 16, 2019, via <https://www.amm.com/>.)

List services and web feed subscribers are the first to receive notification of USGS minerals information publications and data releases. For information on how to subscribe, go to <https://www.usgs.gov/centers/nmic/minerals-information-publication-list-services>.

TABLE 1
SALIENT STATISTICS OF THE COPPER INDUSTRY IN THE UNITED STATES¹

(Metric tons of copper content, unless otherwise specified)

	Source table ²	2019				
		2018 ^p	June	July	August	January– August
Production:						
Primary:						
Mine, recoverable	(2)	1,220,000	106,000	117,000	114,000	847,000
Smelter	(3)	536,000	51,800	34,500	49,200	312,000
Refinery:						
Electrolytic, domestic and foreign	(4)	538,000	40,600	45,100	41,800	294,000
Electrowon	(4)	532,000	45,900	47,600	46,500	353,000
Total	(4)	1,070,000	86,500	92,600	88,300	646,000
Secondary recoverable copper:³						
Refineries	(5)	41,200	3,480	3,860	5,860	31,300
Ingot makers ⁴	(5)	56,800	4,730	4,730	4,730	37,900
Brass and wire-rod mills	(5)	652,000	54,900	52,700	55,800	439,000
Foundries, etc. ⁴	(5)	36,300	3,030	3,030	3,030	24,200
Consumption:						
Apparent	(8)	1,800,000	150,000	154,000	145,000	1,210,000
Refined (reported)	(7)	1,810,000	150,000	147,000	155,000	1,230,000
Purchased copper-base scrap (gross weight)	(9)	918,000	77,500	75,600	80,900	623,000
Stocks at end of period:						
Total refined	(10)	243,000	107,000	117,000	119,000	119,000
Blister, etc.	(10)	9,230	13,600	15,500	14,500	14,500
Price, U.S. producers cathode (cents per pound) ⁵	(11)	298.737	274.968	275.657	264.293	282.958
Imports:⁶						
Ore and concentrates	(13)	32,200	7,360	3,240	2,270	22,300
Refined	(13)	778,000	55,200	68,200	50,600	427,000
Exports:⁶						
Ore and concentrates	(14)	253,000	27,900	25,800	28,100	223,000
Refined	(14)	190,000	13,800	9,810	6,960	91,100

^pPreliminary.

¹Data are rounded to no more than three significant digits, except prices; may not add to totals shown.

²Numbers in parentheses refer to the tables where these data are located.

³Copper recovered from copper-base scrap only.

⁴Estimated based on the monthly average of 2017 annual data.

⁵Source: Platts Metals Week.

⁶Source: U.S. Census Bureau.

TABLE 2
MINE PRODUCTION OF RECOVERABLE COPPER IN THE UNITED STATES¹

(Metric tons)

Period	Recoverable copper			Contained copper		
	Arizona	Others ²	Total	Electrowon	Concentrates ³	Total
2018:^P						
January–August	540,000	272,000	812,000	357,000	471,000	829,000
August	69,100	38,600	108,000	45,500	64,600	110,000
September	63,000	36,800	99,800	43,000	59,100	102,000
October	64,000	36,900	101,000	43,100	59,800	103,000
November	65,200	38,000	103,000	43,000	62,400	105,000
December	69,300	37,300	107,000	45,800	63,000	109,000
January–December	801,000	421,000	1,220,000	532,000	716,000	1,250,000
2019:						
January	67,900	29,900	97,800	42,400	57,600	99,900
February	63,600	33,500	97,100	39,800	59,500	99,200
March	72,300	35,500	108,000	44,600	65,700	110,000
April	69,700	31,600	101,000	41,300	62,300	104,000
May	71,500	33,700	105,000	44,700	62,800	108,000
June	73,400	32,400	106,000	45,900	62,100	108,000
July	79,200	38,000	117,000	47,600	72,300	120,000
August	77,300	37,200	114,000	46,500	70,500	117,000
January–August	575,000	272,000	847,000	353,000	513,000	865,000

^PPreliminary.

¹Data are rounded to no more than three significant digits; may not add to totals shown.

²Includes production from Michigan, Missouri, Montana, Nevada, New Mexico, and Utah.

³Includes copper content of precipitates and other metal concentrates.

TABLE 3
 COPPER PRODUCED AT SMELTERS IN
 THE UNITED STATES^{1, 2}

(Metric tons, copper content)

Period	Anode production
2018: ^P	
January–August	361,000
August	46,100
September	40,800
October	48,200
November	45,300
December	40,600
January–December	536,000
2019:	
January	34,700
February	17,700
March	37,000
April	32,900
May	54,100
June	51,800
July	34,500
August	49,200
January–August	312,000

^PPreliminary.

¹Includes blister and copper anode from primary or secondary sources.

²Data are rounded to no more than three significant digits; may not add to totals shown.

TABLE 4
PRODUCTION OF REFINED COPPER, BY SOURCE AND METHOD OF RECOVERY¹

(Metric tons)

Period	Primary materials			Scrap	Total refined
	Electrolytically refined ²	Electrowon	Total		
2018: ^P					
January–August	356,000	357,000	713,000	26,300	740,000
August	48,400	45,500	93,900	3,220	97,100
September	40,200	43,000	83,200	3,810	87,000
October	46,100	43,100	89,200	4,180	93,400
November	50,000	43,000	93,000	3,370	96,400
December	45,300	45,800	91,200	3,520	94,700
January–December	538,000	532,000	1,070,000	41,200	1,110,000
2019:					
January	37,100	42,400	79,500	3,770	83,200
February	25,000	39,800	64,800	3,330	68,100
March	27,800	44,600	72,400	3,950	76,300
April	38,100	41,300	79,400	3,600	83,000
May	38,300	44,700	83,000	3,470	86,500
June	40,600	45,900	86,500	3,480	90,000
July	45,100	47,600	92,600	3,860	96,500
August	41,800	46,500	88,300	5,860	94,100
January–August	294,000	353,000	646,000	31,300	678,000

^PPreliminary.

¹Data are rounded to no more than three significant digits; may not add to totals shown.

²From domestic and foreign source materials.

TABLE 5
COPPER RECOVERABLE IN UNALLOYED AND ALLOYED FORM FROM PURCHASED COPPER-BASE SCRAP¹

(Metric tons, copper content)

Period	Refineries ²		Ingot makers ³		Brass and wire-rod mills		Foundries, etc. ³		Total ⁴
	New scrap ^e	Old scrap	New scrap	Old scrap	New scrap	Old scrap	New scrap	Old scrap	
2018: ^p									
January–August	13,400	12,900	5,680	32,200	407,000	25,300	17,600	6,640	521,000
August	1,680	1,540	710	4,020	51,600	3,220	2,200	830	65,700
September	1,680	2,130	710	4,020	51,900	2,850	2,200	830	66,300
October	1,680	2,500	710	4,020	52,700	3,490	2,200	830	68,100
November	1,680	1,690	710	4,020	53,900	1,470	2,200	830	66,500
December	1,680	1,840	710	4,020	50,800	2,700	2,200	830	64,800
January–December	20,100	21,000	8,520	48,300	617,000	35,800	26,400	9,960	787,000
2019:									
January	1,680	2,100	710	4,020	52,100	3,520	2,200	830	67,200
February	1,680	1,660	710	4,020	51,900	3,170	2,200	830	66,200
March	1,680	2,270	710	4,020	52,200	3,310	2,200	830	67,200
April	1,680	1,930	710	4,020	51,400	3,340	2,200	830	66,100
May	1,680	1,790	710	4,020	51,600	3,330	2,200	830	66,100
June	1,680	1,800	710	4,020	51,400	3,550	2,200	830	66,100
July	1,680	2,190	710	4,020	49,100	3,590	2,200	830	64,300
August	1,680	4,180	710	4,020	52,800	3,030	2,200	830	69,400
January–August	13,400	17,900	5,680	32,200	412,000	26,800	17,600	6,640	533,000

^eEstimated ^pPreliminary.

¹Data are rounded to no more than three significant digits; may not add to totals shown.

²Electrolytically refined and fire refined from scrap based on source of material at smelter or refinery level.

³Monthly data estimated based on the monthly average of 2017 annual data.

⁴Does not include an estimate, based on reported 2017 annual data, of 3,190 tons per month from new scrap and 2,560 tons per month from old scrap of copper recovered from scrap other than copper-base.

TABLE 6
 PRODUCTION, SHIPMENTS, AND STOCKS OF BRASS AND WIRE-ROD SEMIFABRICATES¹

(Metric tons, gross weight)

Period	Production		Shipments		Stocks, end of period	
	Brass mills	Wire-rod mills	Brass mills	Wire-rod mills	Brass mills	Wire-rod mills
2018: ^p						
January–August	589,000	896,000	590,000	899,000	28,300	23,900
August	73,800	124,000	74,200	120,000	28,300	23,900
September	73,500	110,000	73,300	111,000	28,400	23,000
October	74,300	114,000	73,900	120,000	28,800	16,900
November	73,500	113,000	73,400	108,000	28,900	21,300
December	73,800	97,700	73,000	92,100	29,700	27,000
January–December	884,000	1,330,000	884,000	1,330,000	29,700	27,000
2019:						
January	74,200	113,000	73,800	116,000	30,000	23,700
February	73,500	103,000	73,600	110,000	29,900	17,100
March	74,200	117,000	73,800	112,000	30,400	22,400
April	73,700	104,000	73,900	111,000	30,200	23,800
May	73,800	116,000	74,100	112,000	29,800	28,400
June	73,600	109,000	73,500	116,000	30,000	22,100
July	70,300	110,000	70,900	113,000	29,400	25,200
August	73,800	112,000	73,700	116,000	29,500	22,700
January–August	587,000	885,000	587,000	904,000	29,500	22,700

^pPreliminary.

¹Data are rounded to no more than three significant digits; may not add to totals shown.

TABLE 7
CONSUMPTION OF REFINED COPPER¹

(Metric tons)

Period	Brass mills	Wire-rod mills	Other plants ²	Total
2018: ^p				
January–August	279,000	886,000	41,400	1,210,000
August	35,100	121,000	5,170	161,000
September	35,100	122,000	5,170	163,000
October	34,900	112,000	5,170	152,000
November	34,700	113,000	5,170	153,000
December	34,600	98,000	5,170	138,000
January–December	419,000	1,330,000	62,100	1,810,000
2019:				
January	34,900	116,000	5,170	156,000
February	34,800	106,000	5,170	146,000
March	34,900	123,000	5,170	163,000
April	34,900	119,000	5,170	159,000
May	35,400	114,000	5,170	154,000
June	34,200	110,000	5,170	150,000
July	34,100	107,000	5,170	147,000
August	34,000	116,000	5,170	155,000
January–August	277,000	912,000	41,400	1,230,000

^pPreliminary.

¹Data are rounded to no more than three significant digits; may not add to totals shown.

²Monthly consumption data by ingot makers, chemical plants, foundries, and miscellaneous manufacturers are estimated based on the monthly average of 2017 annual data.

TABLE 8
U.S. APPARENT CONSUMPTION OF COPPER¹

(Metric tons)

Period	Refined copper production ²	Copper in old scrap ³	Refined general imports ⁴	Refined exports ⁴	Stock change during period	Apparent consumption
2018: ^p						
January–August	713,000	97,400	535,000	94,600	81,600	1,170,000
August	93,900	12,200	48,300	15,700	-10,200	149,000
September	83,200	12,400	62,300	15,600	-30,900	173,000
October	89,200	13,400	54,400	31,000	-32,900	159,000
November	93,000	10,600	51,000	36,200	-25,400	144,000
December	91,200	12,000	44,800	12,400	-14,900	150,000
January–December	1,070,000	146,000	747,000	190,000	-22,500	1,800,000
2019:						
January	79,500	13,000	57,600	12,600	-13,800	151,000
February	64,800	12,200	37,000	13,100	-37,900	139,000
March	72,400	13,000	39,900	10,200	-56,500	172,000
April	79,400	12,700	65,000	13,500	-6,390	150,000
May	83,000	12,500	52,000	11,000	-11,300	148,000
June	86,500	12,800	54,800	13,800	-10,100	150,000
July	92,600	13,200	68,200	9,810	10,000	154,000
August	88,300	14,600	51,100	6,960	1,810	145,000
January–August	646,000	104,000	426,000	91,100	-124,000	1,210,000

^pPreliminary.

¹Data are rounded to no more than three significant digits; may not add to totals shown.

²Includes electrolytic production and electrolytically-refined copper from primary materials. All refined copper consumed in scrap form is included in "Copper in old scrap."

³Includes reported monthly production of copper from old scrap of copper-base, an estimate for annual reporters, and a monthly average of copper from non-copper-base materials based on 2017 annual data.

⁴Source: U.S. Census Bureau.

TABLE 9
CONSUMPTION OF PURCHASED COPPER-BASE SCRAP¹

(Metric tons, gross weight)

Period	Smelters and refineries		Ingot makers ²		Brass and wire-rod mills ³		Foundries, etc. ²		Total scrap used
	New scrap ^c	Old scrap	New scrap	Old scrap	New scrap	Old scrap	New scrap	Old scrap	
2018: ^p									
January–August	13,800	13,300	16,200	40,300	471,000	25,900	21,000	7,480	609,000
August	1,730	1,590	2,030	5,040	59,600	3,320	2,620	935	76,800
September	1,730	2,200	2,030	5,040	59,900	2,970	2,620	935	77,500
October	1,730	1,590	2,030	5,040	60,700	3,580	2,620	935	78,200
November	1,730	1,750	2,030	5,040	61,900	1,510	2,620	935	77,500
December	1,730	1,900	2,030	5,040	58,700	2,770	2,620	935	75,800
January–December	20,800	20,700	24,400	60,500	712,000	36,800	31,500	11,200	918,000
2019:									
January	1,730	2,160	2,030	5,040	60,100	3,610	2,620	935	78,300
February	1,730	1,710	2,030	5,040	59,900	3,260	2,620	935	77,200
March	1,730	2,340	2,030	5,040	60,200	3,410	2,620	935	78,300
April	1,730	1,990	2,030	5,040	59,400	3,450	2,620	935	77,200
May	1,730	1,850	2,030	5,040	59,700	3,540	2,620	935	77,500
June	1,730	1,850	2,030	5,040	59,400	3,910	2,620	935	77,500
July	1,730	2,260	2,030	5,040	57,100	3,880	2,620	935	75,600
August	1,730	4,310	2,030	5,040	61,000	3,240	2,620	935	80,900
January–August	13,800	18,500	16,200	40,300	477,000	28,300	21,000	7,480	623,000

^cEstimated. ^pPreliminary.

¹Data are rounded to no more than three significant digits; may not add to totals shown.

²Monthly data estimated based on the monthly average of 2017 annual data.

³Consumption at brass and wire-rod mills assumed equal to receipts.

TABLE 10
COPPER STOCKS AT END OF PERIOD¹

(Metric tons)

Period	Crude copper ²	Refined copper					LME ⁵	Total refined
		Refineries ³	Wire-rod mills ³	Brass mills ³	Other ⁴	Comex		
2018:^P								
August	9,010	4,600	22,600	7,890	5,350	172,000	134,000	347,000
September	9,110	3,120	18,500	7,710	5,350	156,000	125,000	316,000
October	8,940	4,290	19,900	7,460	5,350	142,000	104,000	283,000
November	7,380	5,580	19,200	7,660	5,350	123,000	96,900	258,000
December	9,230	3,850	21,800	8,210	5,350	99,600	104,000	243,000
2019:								
January	9,550	2,700	19,700	8,370	5,350	76,100	117,000	229,000
February	10,200	2,750	32,300	8,270	5,350	51,200	91,300	191,000
March	15,000	2,970	24,800	8,400	5,350	38,700	54,400	135,000
April	8,860	6,630	28,100	8,370	5,350	31,100	48,600	128,000
May	9,210	3,550	23,200	7,250	5,350	28,700	49,000	117,000
June	13,600	5,000	20,700	7,120	5,350	30,700	38,000	107,000
July	15,500	4,350	25,000	7,070	5,350	36,000	39,200	117,000
August	14,500	5,280	15,400	6,930	5,350	40,000	45,700	119,000

^PPreliminary.

¹Data are rounded to no more than three significant digits; may not add to totals shown.

²Copper content of blister and anode.

³Stocks of refined copper as reported; no estimates are made for nonrespondents.

⁴Monthly estimates based on 2017 annual data, comprising stocks at ingot makers, chemical plants, foundries, and miscellaneous manufacturers.

⁵London Metal Exchange Ltd., U.S. warehouses.

TABLE 11
 AVERAGE PRICE OF COPPER IN THE UNITED STATES
 AND ON THE LONDON METAL EXCHANGE

(Cents per pound)

Period	U.S. producers cathode ¹	Comex first position ²	LME cash price Grade A
2018:			
August	276.087	269.387	273.936
September	276.107	269.232	273.044
October	282.498	275.935	281.918
November	281.598	275.098	280.882
December	279.026	272.338	276.397
Year	298.737	292.567	295.960
2019:			
January	275.588	268.238	269.052
February	293.129	285.566	284.754
March	297.974	289.974	292.581
April	299.820	292.007	292.317
May	282.232	274.282	273.412
June	274.968	267.843	266.166
July	275.657	268.657	269.397
August	264.293	257.243	258.890
January–August	282.958	275.476	275.821

¹Sum of "Comex high grade first position" and "NY dealer premium cathode."

²Listed as "Comex high grade first position."

Source: Platts Metals Week.

TABLE 12
AVERAGE BUYING PRICES FOR COPPER SCRAP

(Cents per pound)

Period	Brass mills No. 1 scrap	Refiners No. 2 scrap	Dealers (New York)	
			No. 2 scrap	Red brass turnings and borings
2018:				
August	261.00	229.07	187.80	145.43
September	261.16	228.50	178.45	141.47
October	267.65	239.80	187.50	141.00
November	267.50	240.10	185.00	130.00
December	264.52	238.72	187.50	141.00
Year	283.19	254.90	200.31	150.76
2019:				
January	260.33	235.19	180.79	139.00
February	278.66	252.39	189.82	140.42
March	282.69	253.31	202.50	145.00
April	284.26	252.17	206.50	147.00
May	265.41	231.95	201.05	143.18
June	257.40	225.70	188.00	138.00
July	258.48	227.95	186.32	138.00
August	247.20	217.00	181.68	134.18
January–August	266.80	236.96	192.08	140.60

Source: American Metal Market.

TABLE 13
U.S. IMPORTS FOR CONSUMPTION OF COPPER (UNMANUFACTURED), BY CLASS¹

(Metric tons, copper content)

Country or locality	Ore and concentrates ²			Matte, ash, and precipitates ³			Blister and anodes			Refined		
	2019			2019			2019			2019		
	2018	August	January–August	2018	August	January–August	2018	August	January–August	2018	August	January–August
Belgium	--	--	--	283	--	228	--	--	--	10,100	--	2,300
Bolivia	--	--	--	--	--	--	--	--	--	1,460	--	1,390
Canada	40	(4)	(4)	613	15	218	(4)	(4)	(4)	172,000	12,900	86,900
Chile	--	--	--	--	--	--	--	--	--	483,000	27,400	275,000
China	8	--	--	2	--	--	--	--	(4)	111	(4)	189
Congo (Brazzaville)	--	--	--	--	--	--	--	--	--	1,040	--	--
Congo (Kinshasa)	--	--	--	--	--	--	--	--	--	3,380	--	--
Finland	--	--	--	--	--	--	292	16	174	--	--	38
Germany	--	--	--	--	--	--	(4)	--	--	1,260	262	1,400
Japan	--	--	--	10	--	50	2	(4)	(4)	3,990	207	1,880
Malaysia	--	--	--	--	--	--	54	--	--	--	--	--
Mexico	32,100	2,270	22,300	539	(4)	59	--	--	(4)	63,100	7,790	52,700
Netherlands	--	--	--	115	--	--	2	--	3	(4)	(4)	(4)
Peru	--	--	--	--	--	--	--	--	--	19,100	2,010	5,010
Saudi Arabia	--	--	--	85	--	98	--	--	--	--	--	--
Zambia	--	--	--	--	--	--	--	--	--	18,900	--	683
Other	--	--	2	175	2	537	5	36	39	562	75	129
Total	32,200	2,270	22,300	1,820	16	1,190	355	52	217	778,000	50,600	427,000

-- Zero.

¹Data are rounded to no more than three significant digits; may not add to totals shown.

²Copper ore and concentrates only; excludes copper contained in ore and concentrates of other metals.

³Copper matte, ash, and precipitates only; excludes the copper content of mattes and ashes of other metals.

⁴Less than ½ unit.

Source: U.S. Census Bureau.

TABLE 14
U.S. EXPORTS OF COPPER (UNMANUFACTURED), BY CLASS¹

(Metric tons, copper content)

Country or locality	Ore and concentrates ²			Matte, ash, and precipitates ³			Blister and anodes			Refined		
	2019			2019			2019			2019		
	2018	August	January– August	2018	August	January– August	2018	August	January– August	2018	August	January– August
Belgium	20	19	111	2,150	350	1,820	226	15	320	--	--	29
Brazil	3,040	3,200	5,370	--	--	--	62	--	39	23	--	1
Bulgaria	2,990	--	11,200	--	--	--	--	--	--	--	--	--
Canada	17,200	1,750	9,250	19,500	582	11,000	4,320	123	3,130	37,300	1,290	22,500
China	47,500	--	7	1,650	--	90	210	12	153	47,600	1	7
Germany	4,810	--	--	1,130	74	398	282	--	226	2	--	1
Hong Kong	--	--	--	--	--	19	462	20	259	(4)	19	20
India	--	--	--	44	--	--	585	20	196	9	--	36
Italy	1	--	--	10	--	--	281	42	130	24	(4)	26
Japan	13,500	--	10,100	230	--	8	36	20	23	14	1	4
Korea, Republic of	4,690	--	6,910	817	--	74	1,680	136	1,140	2,200	--	180
Malaysia	545	--	35	413	--	--	178	--	119	62	--	4
Mexico	147,000	23,100	165,000	1,430	1	1,210	80	1	25	102,000	5,620	68,200
Philippines	1,180	--	4,720	--	--	--	42	8	41	(4)	--	2
Slovakia	--	--	--	526	97	643	--	--	--	--	--	--
Spain	10,500	--	10,100	210	--	--	101	--	40	1	--	--
Other	120	11	499	1,850	34	512	503	58	721	278	25	135
Total	253,000	28,100	223,000	30,000	1,140	15,700	9,060	454	6,560	190,000	6,960	91,100

-- Zero.

¹Data are rounded to no more than three significant digits; may not add to totals shown.

²Copper ore and concentrates only; excludes copper contained in ore and concentrates of other metals.

³Copper matte, ash, and precipitates only; excludes the copper content of mattes and ashes of other metals.

⁴Less than ½ unit.

Source: U.S. Census Bureau.

TABLE 15
U.S. IMPORTS FOR CONSUMPTION OF COPPER SCRAP¹

(Metric tons, gross weight)

Country or locality	Unalloyed			Alloyed		
	2018	2019		2018	2019	
		August	January– August		August	January– August
Bahamas	23	--	--	569	64	536
Canada	16,800	1,370	11,300	72,000	3,320	37,500
Chile	177	--	--	321	38	1,280
Colombia	367	--	121	926	123	829
Costa Rica	459	87	358	750	192	777
Dominican Republic	80	29	416	901	186	1,470
Guatemala	92	--	8	501	47	494
Honduras	5	5	39	589	74	362
Hong Kong	7	--	16	1,450	--	229
Japan	278	1	959	52	--	--
Mexico	10,800	855	8,370	38,600	3,610	28,200
Pakistan	567	--	94	--	--	--
Panama	1,020	57	445	640	41	292
Spain	--	--	--	637	--	--
Venezuela	2,540	--	28	646	164	435
Other	1,270	106	631	4,150	255	3,260
Total	34,500	2,510	22,800	123,000	8,120	75,700

-- Zero.

¹Data are rounded to no more than three significant digits; may not add to totals shown.

Source: U.S. Census Bureau.

TABLE 16
U.S. EXPORTS OF COPPER SCRAP¹

(Metric tons, gross weight)

Country or locality	Unalloyed							Alloyed					
	2019							2019					
	2018	No. 1		No. 2		Other		2018	Segregated		Unsegregated		
		August	January– August	August	January– August	August	January– August		August	January– August	August	January– August	
Belgium	19,500	542	4,550	1,050	7,780	231	1,710	11,800	--	597	1,330	8,820	
Canada	51,900	--	--	--	--	4,220	33,000	40,200	--	--	3,140	33,000	
China	193,000	1,580	19,900	2,000	21,700	1,100	18,100	78,600	39	5,170	1,150	6,440	
Germany	24,000	2,050	12,600	847	5,650	197	1,560	13,300	42	1,060	1,490	8,890	
Greece	7,630	383	4,810	27	455	140	1,070	1,150	--	198	23	262	
Hong Kong	20,700	754	5,540	481	4,630	548	6,070	23,600	969	7,710	2,230	15,900	
India	14,000	373	1,910	700	2,820	496	5,410	34,300	3,270	20,800	1,570	9,170	
Japan	29,300	510	4,240	1,160	9,760	327	2,440	26,700	327	4,140	981	10,800	
Korea, Republic of	45,800	2,390	14,000	577	3,230	1,580	8,710	25,900	920	8,190	862	8,120	
Malaysia	47,800	835	8,590	2,450	12,400	1,830	22,400	71,800	1,690	21,900	13,500	83,000	
Netherlands	8,030	19	559	19	414	393	2,590	2,280	35	216	17	599	
Pakistan	1,450	23	382	5	519	--	57	16,500	52	411	2,550	11,500	
Spain	760	25	289	--	161	79	413	10,100	151	2,120	362	4,450	
Taiwan	17,100	654	5,880	269	1,350	861	4,290	18,300	167	3,980	777	8,420	
Thailand	3,000	174	619	80	745	152	965	11,100	81	357	917	10,000	
Other	25,700	1,250	10,100	752	5,440	762	4,200	17,900	253	2,610	2,160	13,100	
Total	509,000	11,600	93,900	10,400	77,100	12,900	113,000	403,000	8,010	79,500	33,100	232,000	

-- Zero.

¹Data are rounded to no more than three significant digits; may not add to totals shown.

Source: U.S. Census Bureau.