

Mineral Industry Surveys

For information, contact:

Amy C. Tolcin, Zinc Commodity Specialist (Acting)
 National Minerals Information Center
 U.S. Geological Survey
 989 National Center
 Reston, VA 20192
 Telephone: (703) 648-4940 Fax: (703) 648-7757
 Email: atolcin@usgs.gov

Hodan A. Fatah (Data)
 Telephone: (703) 648-4971
 Fax: (703) 648-7975
 Email: hfatah@usgs.gov

Internet: <https://www.usgs.gov/centers/nmic>

ZINC IN JUNE 2019

Domestic mine production (recoverable) of zinc in June 2019 was 70,500 metric tons (t) (tables 1, 2). Average daily mine production in June was 2,350 t, 8% higher than that in the previous month but 5% lower than that in June 2018 (fig. 1).

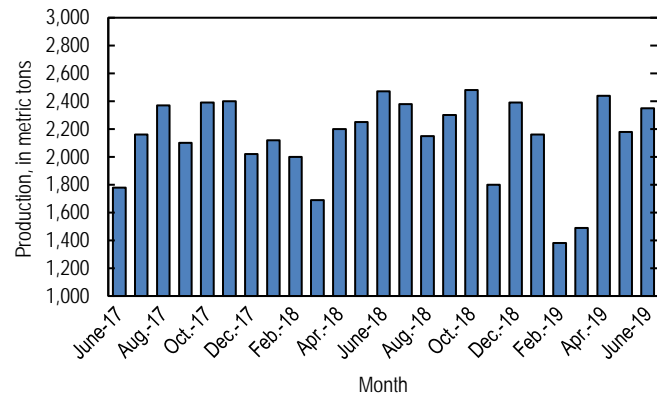


Figure 1. Average daily domestic zinc mine production (recoverable) from June 2017 through June 2019.

Stocks and Prices

Global London Metal Exchange Ltd. (LME) stocks of Special High Grade (SHG) zinc were 95,125 t at the end of June 2019, 5% lower than stocks at the end of May and 62% lower than stocks at the end of June 2018 (fig. 2, table 7).

The monthly average Platts Metals Week North American SHG zinc price in June 2019 was \$1.26 per pound, 5% lower

than that in the previous month and 15% lower than that in June 2018. The June 2019 average LME cash price for SHG zinc was \$2,601.56 per metric ton, 5% lower than that in May and 16% lower than that in June 2018 (fig. 3, table 6).

The North American premium to the LME cash price in June 2019 averaged 8.06 cents per pound, 8% less than that in the previous month and slightly less than that in June 2018 (fig. 3, table 6).

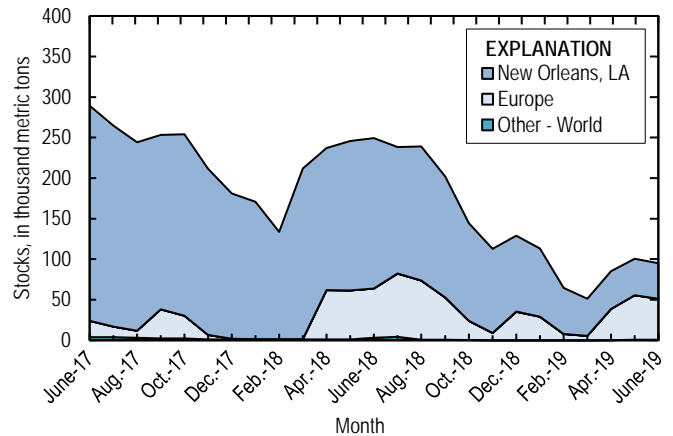


Figure 2. Global LME stocks of Special High Grade zinc, monthend, from June 2017 through June 2019. Source: London Metal Exchange Ltd.

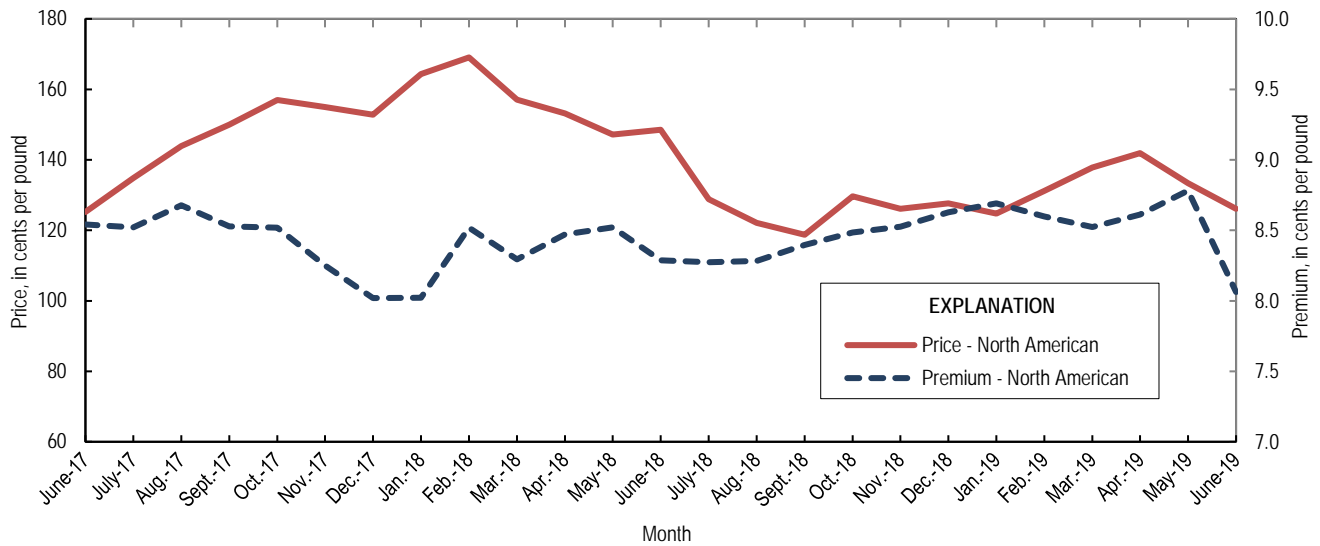


Figure 3. Average monthly North American price and premium for Special High Grade zinc from June 2017 through June 2019. Source: Platts Metals Week.

List services and web feed subscribers are the first to receive notification of USGS minerals information publications and data releases. For information on how to subscribe, go to <https://www.usgs.gov/centers/nmic/minerals-information-publication-list-services>.

TABLE 1
SALIENT ZINC STATISTICS¹

(Metric tons, unless otherwise specified)

	2018	2019		
	January– December ^p	May	June	January– June ²
Production:				
Mine, zinc content of concentrate ³	824,000	69,700	72,000	374,000
Mine, recoverable zinc ³	799,000	67,700	70,500	363,000
Smelter, refined zinc ^e	116,000	8,600	8,600	52,000
Consumption of refined zinc, apparent ⁴	868,000	76,400	75,800	454,000
Imports for consumption:				
Ore and concentrate (zinc content)	32	10	--	10
Refined zinc	775,000	68,200	67,500	406,000
Exports:				
Ore and concentrate (zinc content)	806,000	38,900	40,100	214,000
Refined zinc	23,300	365	222	3,500
Price:⁵				
London Metal Exchange cash, average, dollars per metric ton	2,924.55	2,746.79	2,601.56	2,733.01
Platts Metals Week North American, average, cents per pound	141.05	133.37	126.07	132.51

^cEstimated. ^pPreliminary. -- Zero.

¹Data are rounded to no more than three significant digits, except prices; may not add to totals shown.

²May include revisions to previously published data.

³Reported zinc content in both zinc and lead concentrates.

⁴Smelter production plus imports for consumption minus domestic exports.

⁵Special High Grade Zinc.

TABLE 2
MINE AND SMELTER PRODUCTION OF ZINC
IN THE UNITED STATES¹

(Metric tons)

Period	Mine ²		Smelter ^c
	Zinc content	Recoverable	
2018:			
June	76,700	74,200	11,300
July	76,400	73,900	9,920
August	68,800	66,500	9,920
September	70,000	68,900	9,920
October	79,600	77,000	11,900
November	55,700	53,900	11,900
December	76,700	74,200	11,900
January–December	824,000	799,000	116,000
2019:			
January	68,900	66,900	8,600
February	39,800	38,600	8,600
March	47,600	46,100	8,600
April	75,500	73,200	8,600
May	69,700	67,700	8,600
June	72,000	70,500	8,600
January–June	374,000	363,000	52,000

^cEstimated.

¹Data are rounded to no more than three significant digits; may not add to totals shown.

²Includes the zinc content in both lead and zinc concentrates.

TABLE 3
U.S. IMPORTS FOR CONSUMPTION OF ZINC¹

(Gross weight, unless otherwise specified)

Material	2018		2019			
	Quantity (metric tons)	Value (thousands)	June		January–June ²	
			Quantity (metric tons)	Value (thousands)	Quantity (metric tons)	Value (thousands)
Ore and concentrate (zinc content)	32	\$23	--	--	10	\$7
Unwrought:						
Refined zinc	775,000	2,350,000	67,500	\$193,000	406,000	1,140,000
Zinc alloys	4,390	14,300	6	23	1,320	3,800
Wrought:						
Bars, rods, profiles, wire	3,470	13,900	235	917	1,490	5,500
Plates, sheets, strip, foil	5,410	16,400	401	1,570	1,640	6,630
Ash and residues:						
Hard zinc spelter	19	31	--	--	--	--
Zinc dross and skimmings	4,300	8,200	299	501	1,780	2,980
Other (zinc content)	1,250	823	319	185	1,060	639
Other:						
Powders, flakes, dust	26,600	106,000	2,050	7,980	12,800	48,300
Waste and scrap	12,900	22,000	752	1,710	4,210	8,770
Chemicals:						
Lithopone	272	822	193	308	657	2,190
Zinc oxide	115,000	334,000	7,150	20,400	50,100	142,000
Zinc chloride	208	1,840	15	210	59	607
Zinc sulfate	98,800	106,000	5,370	5,270	35,500	34,100
Zinc sulfide	2,730	10,400	70	205	364	1,420

-- Zero.

¹Data are rounded to no more than three significant digits.

²May include revisions to previously published data.

Source: U.S. Census Bureau.

TABLE 4
U.S. IMPORTS OF ZINC, BY TYPE OF MATERIAL AND COUNTRY OR LOCALITY¹

(Metric tons, gross weight, unless otherwise specified)

Material and country or locality	General imports			Imports for consumption		
	2018	2019		2018	2019	
		June	January–June ²		June	January–June ²
Ore and concentrate (zinc content):						
Canada	(3)	--	10	(3)	--	10
China	32	--	--	32	--	--
Total	32	--	10	32	--	10
Refined zinc:						
Australia	--	--	--	676	--	--
Belgium	--	--	--	4,340	20	119
Brazil	601	--	1,910	601	--	1,910
Canada	524,000	46,500	270,000	524,000	46,500	270,000
China	22	3	14	5,380	3	2,070
India	2,840	--	--	2,840	--	--
Korea, Republic of	--	--	--	6,810	100	124
Mexico	101,000	11,900	67,900	101,000	11,900	67,900
Namibia	--	--	--	122	--	--
Netherlands	--	--	--	6,040	--	374
Peru	46,300	6,140	28,800	46,300	6,140	28,800
Poland	641	--	--	641	--	--
South Africa	5,480	--	--	--	--	--
Spain	20,000	1,370	1,370	76,100	2,740	34,700
Taiwan	36	5	21	36	5	21
Other	3	3	5	3	3	5
Total	701,000	66,000	370,000	775,000	67,500	406,000
Oxide:						
Australia	127	11	144	127	11	144
Belgium	6	--	29	6	--	29
Brazil	127	--	5	127	--	5
Canada	51,200	2,950	22,600	51,200	2,950	22,600
China	422	18	77	422	18	77
Germany	1,150	47	720	1,150	47	720
Greece	120	--	180	120	--	180
Hong Kong	58	--	5	58	--	5
India	119	19	63	119	19	63
Italy	19	--	8	19	--	8
Japan	776	100	550	776	100	550
Korea, Republic of	76	5	33	76	5	33
Mexico	49,800	2,790	19,400	49,800	2,790	19,400
Netherlands	8,400	993	4,800	8,400	993	4,800
Peru	2,540	206	1,110	2,540	206	1,110
Philippines	46	--	--	46	--	--
Russia	--	--	20	--	--	20
United Kingdom	105	--	334	105	--	334
Other	75	--	8	75	--	8
Total	115,000	7,150	50,100	115,000	7,150	50,100

-- Zero.

¹Data are rounded to no more than three significant digits; may not add to totals shown.

²May include revisions to previously published data.

³Less than ½ unit.

Source: U.S. Census Bureau.

TABLE 5
U.S. EXPORTS OF ZINC¹

(Gross weight, unless otherwise specified)

Material	2018		2019			
	Quantity (metric tons)	Value (thousands)	June		January–June ²	
			Quantity (metric tons)	Value (thousands)	Quantity (metric tons)	Value (thousands)
Ore and concentrate (zinc content)	806,000	\$1,530,000	40,100	\$63,100	214,000	\$325,000
Unwrought:						
Refined zinc	23,300	58,000	222	704	3,500	9,270
Zinc alloys	21,800	67,200	1,640	4,910	10,900	32,800
Wrought:						
Bars, rods, profiles, wire	10,600	30,600	807	2,300	4,940	14,800
Plates, sheets, strip, foil	7,170	29,900	678	2,290	3,190	12,300
Ash and residues:						
Hard zinc spelter	8,300	16,200	721	1,540	4,510	9,010
Other (zinc content)	23,900	43,000	2,680	4,870	12,500	21,100
Other:						
Powders, flakes, dust	13,500	56,600	806	3,020	8,300	29,800
Waste and scrap	40,400	49,800	2,400	2,820	17,500	23,400
Chemicals:						
Lithopone	179	1,280	8	46	81	430
Zinc oxide	60,200	91,800	767	2,210	5,370	14,100
Zinc chloride	281	440	26	59	151	236
Zinc sulfate	1,000	879	8	12	266	415
Zinc sulfide	1,730	15,900	179	1,710	957	8,480

¹Data are rounded to no more than three significant digits.

²May include revisions to previously published data.

Source: U.S. Census Bureau.

TABLE 6
AVERAGE PRICES FOR SPECIAL HIGH GRADE ZINC

Period	North	London Metal Exchange	
	American ¹	cash ²	
	¢/lb.	¢/lb.	\$/t
2018:			
June	148.50	140.22	3,091.21
July	128.85	120.57	2,658.18
August	122.14	113.85	2,510.05
September	118.74	110.35	2,432.71
October	129.65	121.17	2,671.26
November	126.11	117.58	2,592.28
December	127.69	119.06	2,624.87
January–December	141.05	132.66	2,924.55
2019:			
January	124.74	116.05	2,558.49
February	131.17	122.58	2,702.34
March	137.84	129.32	2,850.91
April	141.88	133.26	2,937.96
May	133.37	124.59	2,746.79
June	126.07	118.01	2,601.56
January–June	132.51	123.97	2,733.01

¹Platts Metals Week North American price. Based on the London Metal Exchange cash price plus premium.

²Average of the cash buyer price and the cash seller and settlement price.

Source: Platts Metals Week.

TABLE 7
LONDON METAL EXCHANGE (LME) STOCKS OF SPECIAL HIGH GRADE ZINC, END OF PERIOD

(Metric tons)

Period	United States			Europe	Other	Total LME
	Chicago, IL	New Orleans, LA	Total			
2018:						
June	--	185,425	185,425	60,650	3,175	249,250
July	--	155,900	155,900	78,150	4,075	238,125
August	--	165,375	165,375	73,125	675	239,175
September	--	149,350	149,350	51,900	675	201,925
October	--	120,400	120,400	23,525	250	144,175
November	--	103,575	103,575	8,975	25	112,575
December	350	93,625	93,975	35,000	25	129,000
2019:						
January	25	84,000	84,025	29,150	25	113,200
February	--	56,625	56,625	7,900	25	64,550
March	--	45,900	45,900	5,350	25	51,275
April	--	46,475	46,475	38,575	--	85,050
May	--	44,900	44,900	54,900	575	100,375
June	--	43,825	43,825	50,500	800	95,125

-- Zero.

Source: London Metal Exchange, Ltd.