

Mineral Industry Surveys

For information, contact:

Daniel M. Flanagan, Copper Commodity Specialist
 National Minerals Information Center
 U.S. Geological Survey
 989 National Center
 Reston, VA 20192
 Telephone: (703) 648-7726, Fax: (703) 648-7757
 Email: dflanagan@usgs.gov

Sheema Merchant (Data)
 Telephone: (703) 659-9944
 Fax: (703) 648-7975
 Email: smerchant@usgs.gov

Internet: <https://www.usgs.gov/centers/nmic>

COPPER IN APRIL 2019

In April 2019, U.S. mine production of recoverable copper was 97,800 metric tons (t). The average daily mine production was 3,260 t, a decrease of 4% from that in March and slightly lower than that in April 2018 (fig. 1). Year-to-date recoverable mine output through April 2019 was 397,000 t, an increase of 3% relative to the same period in 2018 (table 2).

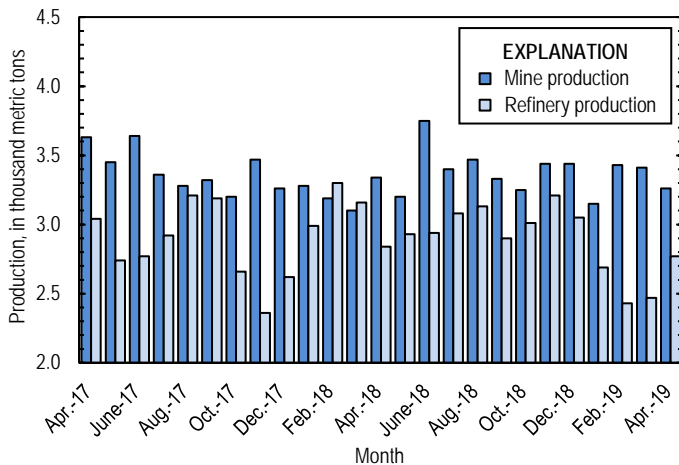


Figure 1. Average daily U.S. copper mine (recoverable) and refinery production from April 2017 through April 2019.

Smelter production in April 2019 was 32,900 t. The average daily smelter output was 1,100 t, a decline of 8% from that in March and a decrease of 27% compared with the daily average in April 2018. Year-to-date output through April 2019 was 122,000 t, 33% less than that through April 2018 (table 3).

Total refinery production in the United States was 83,000 t in April 2019; data for electrolytic and electrowon output, as well as refined production from scrap, are in table 4. The average daily refinery production was 2,770 t, an increase of 12% from that in March and 3% lower than that in April 2018 (fig. 1). Year-to-date refinery production through April 2019 was 311,000 t, a decrease of 16% from that in the same period in 2018 (table 4).

Prices

The average April 2019 COMEX spot copper price was \$2.92 per pound, a slight increase from \$2.90 per pound in March and 5% lower than \$3.09 per pound in April 2018 (fig. 2, table 11). The average price of New York dealers' number 2 scrap in April 2019 was \$2.07 per pound, slightly higher than \$2.03 per pound in March and slightly less than \$2.09 per pound in April 2018 (fig. 2, table 12).

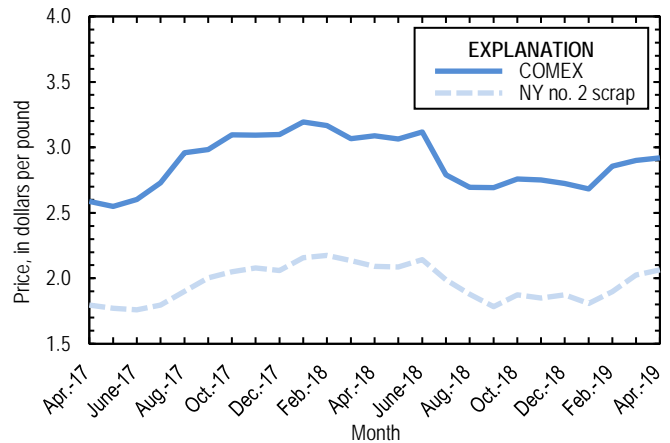


Figure 2. Monthly average COMEX copper price and New York no. 2 copper scrap price from April 2017 through April 2019. Sources: American Metal Market, Platts Metals Week.

Stocks

Refined copper stocks in the United States fell for the ninth consecutive month and totaled 128,000 t at the end of April 2019, a decrease of 5% from those in March, 59% lower than those in April 2018, and 64% less than the most recent peak in July 2018. Stocks at wire-rod mills rose by 14%, COMEX stocks declined by 20%, and London Metal Exchange Ltd. stocks in U.S. warehouses decreased by 11% compared with those at the end of March (fig. 3, table 10).

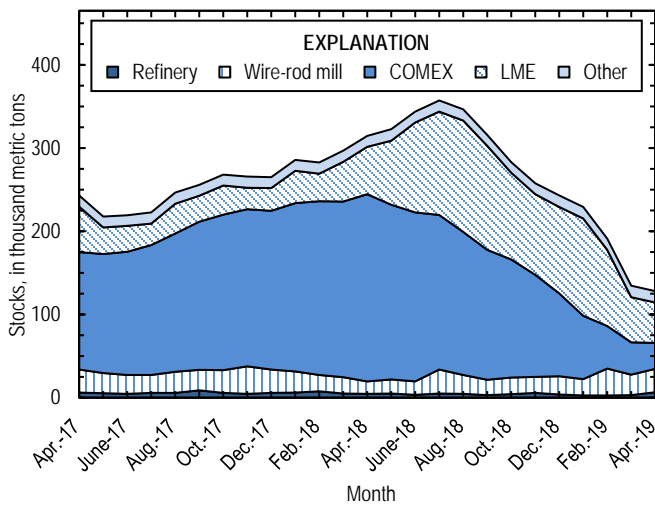


Figure 3. Monthly domestic refined copper stocks, by type, from April 2017 through April 2019. Sources: American Metal Market, London Metal Exchange Ltd., and U.S. Geological Survey.

Industry News

Peru.—On March 26, MMG Ltd. (Australia) declared force majeure on copper produced at the Las Bambas Mine owing to demonstrations that were blocking transport of copper

concentrates. Shipments from the mine resumed on April 13 after the company reached an agreement with the protesters to end a road blockade that had been in place since mid-February (Decena, 2019; de la Paz, 2019). In 2018, Las Bambas produced 385,000 t of copper in concentrates, nearly 2% of global mined copper output (MMG Ltd., 2019, p. 22).

References Cited

Decena, Karl, 2019, Fuerabamba ends blockade at MMG’s Las Bambas copper mine: S&P Global Market Intelligence, April 14. (Accessed September 23, 2019, via <https://www.snl.com/>.)
 de la Paz, F.D.M, 2019, MMG to declare force majeure on copper shipments from Las Bambas mine: S&P Global Market Intelligence, March 26. (Accessed September 12, 2019, via <https://www.snl.com/>.)
 MMG Ltd., 2019, Annual report—2018: Southbank, Victoria, Australia, MMG Ltd., 174 p. (Accessed September 12, 2019, at http://www.mmg.com/en/Investors-and-Media/Reports-and-Presentations/~media/MMG1178_AR_2018_FA3_web-version.pdf.)

List services and web feed subscribers are the first to receive notification of USGS minerals information publications and data releases. For information on how to subscribe, go to <https://www.usgs.gov/centers/nmic/minerals-information-publication-list-services>.

TABLE 1
SALIENT STATISTICS OF THE COPPER INDUSTRY IN THE UNITED STATES¹

(Metric tons of copper content, unless otherwise specified)

	Source table ²	2019				
		2018 ^p	February	March	April	January– April
Production:						
Primary:						
Mine, recoverable	(2)	1,220,000	96,100	106,000	97,800	397,000
Smelter	(3)	536,000	17,700	37,000	32,900	122,000
Refinery:						
Electrolytic, domestic and foreign	(4)	538,000	25,000	27,800	38,100	128,000
Electrowon	(4)	532,000	39,800	44,600	41,300	168,000
Total	(4)	1,070,000	64,800	72,500	79,400	296,000
Secondary recoverable copper:³						
Refineries	(5)	41,200	3,330	3,950	3,600	14,700
Ingot makers ⁴	(5)	56,800	4,730	4,730	4,730	18,900
Brass and wire-rod mills	(5)	652,000	55,100	55,500	54,700	221,000
Foundries, etc. ⁴	(5)	36,300	3,030	3,030	3,030	12,100
Consumption:						
Apparent	(8)	1,800,000	139,000	172,000	150,000	612,000
Refined (reported)	(7)	1,810,000	146,000	163,000	159,000	625,000
Purchased copper-base scrap (gross weight)	(9)	918,000	77,200	78,300	77,200	311,000
Stocks at end of period:						
Total refined	(10)	243,000	191,000	135,000	128,000	128,000
Blister, etc.	(10)	9,230	10,200	15,000	8,860	8,860
Price, U.S. producers cathode (cents per pound) ⁵	(11)	298.737	293.129	297.974	299.820	291.628
Imports:⁶						
Ore and concentrates	(13)	32,200	1,010	824	3,110	5,620
Refined	(13)	778,000	37,800	40,500	65,400	201,000
Exports:⁶						
Ore and concentrates	(14)	253,000	25,100	33,800	23,200	107,000
Refined	(14)	190,000	13,100	10,200	13,500	49,500

^pPreliminary.

¹Data are rounded to no more than three significant digits, except prices; may not add to totals shown.

²Numbers in parentheses refer to the tables where these data are located.

³Copper recovered from copper-base scrap only.

⁴Estimated based on the monthly average of 2017 annual data.

⁵Source: Platts Metals Week.

⁶Source: U.S. Census Bureau.

TABLE 2
MINE PRODUCTION OF RECOVERABLE COPPER IN THE UNITED STATES¹

(Metric tons)

Period	Recoverable copper			Contained copper		
	Arizona	Others ²	Total	Electrowon	Concentrates ³	Total
2018: ^P						
January–April	264,000	123,000	387,000	175,000	220,000	395,000
April	65,400	34,700	100,000	43,200	58,800	102,000
May	69,300	29,800	99,200	46,000	55,200	101,000
June	70,600	41,900	113,000	44,900	70,100	115,000
July	66,800	38,500	105,000	46,000	61,400	107,000
August	69,100	38,600	108,000	45,500	64,600	110,000
September	63,000	36,800	99,800	43,000	59,100	102,000
October	64,000	36,900	101,000	43,100	59,800	103,000
November	65,200	38,000	103,000	43,000	62,400	105,000
December	69,300	37,300	107,000	45,800	63,000	109,000
January–December	801,000	421,000	1,220,000	532,000	716,000	1,250,000
2019:						
January	67,800	29,900	97,700	42,400	57,400	99,800
February	62,600	33,500	96,100	39,800	58,400	98,200
March	70,300	35,500	106,000	44,600	63,300	108,000
April	66,200	31,600	97,800	41,300	58,500	99,800
January–April	267,000	130,000	397,000	168,000	238,000	406,000

^PPreliminary.

¹Data are rounded to no more than three significant digits; may not add to totals shown.

²Includes production from Michigan, Missouri, Montana, Nevada, New Mexico, and Utah.

³Includes copper content of precipitates and other metal concentrates.

TABLE 3
COPPER PRODUCED AT SMELTERS IN
THE UNITED STATES^{1,2}

(Metric tons, copper content)

Period	Anode production
2018: ^p	
January–April	182,000
April	44,800
May	39,000
June	45,700
July	47,500
August	46,100
September	40,800
October	48,200
November	45,300
December	40,600
January–December	536,000
2019:	
January	34,700
February	17,700
March	37,000
April	32,900
January–April	122,000

^pPreliminary.

¹Includes blister and copper anode from primary or secondary sources.

²Data are rounded to no more than three significant digits; may not add to totals shown.

TABLE 4
PRODUCTION OF REFINED COPPER, BY SOURCE AND METHOD OF RECOVERY¹

(Metric tons)

Period	Primary materials			Scrap	Total refined
	Electrolytically refined ²	Electrowon	Total		
2018: ^P					
January–April	180,000	175,000	355,000	12,900	368,000
April	38,700	43,200	82,000	3,260	85,200
May	41,600	46,000	87,600	3,330	90,900
June	39,800	44,900	84,700	3,400	88,000
July	45,900	46,000	91,900	3,390	95,300
August	48,400	45,500	93,900	3,220	97,100
September	40,200	43,000	83,200	3,810	87,000
October	46,100	43,100	89,200	4,180	93,400
November	50,000	43,000	93,000	3,370	96,400
December	45,300	45,800	91,200	3,520	94,700
January–December	538,000	532,000	1,070,000	41,200	1,110,000
2019:					
January	37,100	42,400	79,500	3,770	83,200
February	25,000	39,800	64,800	3,330	68,100
March	27,800	44,600	72,500	3,950	76,400
April	38,100	41,300	79,400	3,600	83,000
January–April	128,000	168,000	296,000	14,700	311,000

^PPreliminary.

¹Data are rounded to no more than three significant digits; may not add to totals shown.

²From domestic and foreign source materials.

TABLE 5
COPPER RECOVERABLE IN UNALLOYED AND ALLOYED FORM FROM PURCHASED COPPER-BASE SCRAP¹

(Metric tons, copper content)

Period	Refineries ²		Ingot makers ³		Brass and wire-rod mills		Foundries, etc. ³		Total ⁴
	New scrap ^e	Old scrap	New scrap	Old scrap	New scrap	Old scrap	New scrap	Old scrap	
2018: ^p									
January–April	6,710	6,240	2,840	16,100	199,000	12,900	8,780	3,320	256,000
April	1,680	1,580	710	4,020	50,800	3,270	2,200	830	65,100
May	1,680	1,650	710	4,020	53,000	3,180	2,200	830	67,300
June	1,680	1,720	710	4,020	52,400	2,960	2,200	830	66,500
July	1,680	1,710	710	4,020	51,600	3,060	2,200	830	65,800
August	1,680	1,540	710	4,020	51,600	3,220	2,200	830	65,700
September	1,680	2,130	710	4,020	51,900	2,850	2,200	830	66,300
October	1,680	2,500	710	4,020	52,700	3,490	2,200	830	68,100
November	1,680	1,690	710	4,020	53,900	1,470	2,200	830	66,500
December	1,680	1,840	710	4,020	50,800	2,700	2,200	830	64,800
January–December	20,100	21,000	8,520	48,300	617,000	35,800	26,400	9,960	787,000
2019:									
January	1,680	2,100	710	4,020	52,100	3,520	2,200	830	67,200
February	1,680	1,660	710	4,020	51,900	3,170	2,200	830	66,200
March	1,680	2,270	710	4,020	52,200	3,310	2,200	830	67,200
April	1,680	1,930	710	4,020	51,400	3,340	2,200	830	66,100
January–April	6,710	7,950	2,840	16,100	208,000	13,300	8,780	3,320	267,000

^eEstimated ^pPreliminary.

¹Data are rounded to no more than three significant digits; may not add to totals shown.

²Electrolytically refined and fire refined from scrap based on source of material at smelter or refinery level.

³Monthly data estimated based on the monthly average of 2017 annual data.

⁴Does not include an estimate, based on reported 2017 annual data, of 3,190 tons per month from new scrap and 2,560 tons per month from old scrap of copper recovered from scrap other than copper-base.

TABLE 6
 PRODUCTION, SHIPMENTS, AND STOCKS OF BRASS AND WIRE-ROD SEMIFABRICATES¹

(Metric tons, gross weight)

Period	Production		Shipments		Stocks, end of period	
	Brass mills	Wire-rod mills	Brass mills	Wire-rod mills	Brass mills	Wire-rod mills
2018: ^p						
January–April	294,000	440,000	295,000	450,000	29,200	16,400
April	73,600	103,000	73,600	111,000	29,200	16,400
May	73,600	115,000	74,000	113,000	28,800	18,400
June	73,900	118,000	73,800	114,000	28,900	22,200
July	73,400	99,300	73,700	102,000	28,700	19,600
August	73,800	124,000	74,200	120,000	28,300	23,900
September	73,500	110,000	73,300	111,000	28,400	23,000
October	74,300	114,000	73,900	120,000	28,800	16,900
November	73,500	113,000	73,400	108,000	28,900	21,300
December	73,800	97,700	73,000	92,100	29,700	27,000
January–December	884,000	1,330,000	884,000	1,330,000	29,700	27,000
2019:						
January	74,200	113,000	73,800	116,000	30,000	23,700
February	73,500	103,000	73,600	110,000	29,900	17,100
March	74,200	117,000	73,800	112,000	30,400	22,400
April	73,700	104,000	73,900	111,000	30,100	23,800
January–April	296,000	437,000	295,000	449,000	30,100	23,800

^pPreliminary.

¹Data are rounded to no more than three significant digits; may not add to totals shown.

TABLE 7
CONSUMPTION OF REFINED COPPER¹

(Metric tons)

Period	Brass mills	Wire-rod mills	Other plants ²	Total
2018: ^p				
January–April	140,000	440,000	20,700	600,000
April	35,100	105,000	5,170	145,000
May	34,900	115,000	5,170	155,000
June	34,900	106,000	5,170	146,000
July	34,800	104,000	5,170	144,000
August	35,100	121,000	5,170	161,000
September	35,100	122,000	5,170	163,000
October	34,900	112,000	5,170	152,000
November	34,700	113,000	5,170	153,000
December	34,600	98,000	5,170	138,000
January–December	419,000	1,330,000	62,100	1,810,000
2019:				
January	34,900	116,000	5,170	156,000
February	34,800	106,000	5,170	146,000
March	34,900	123,000	5,170	163,000
April	34,900	119,000	5,170	159,000
January–April	140,000	465,000	20,700	625,000

^pPreliminary.

¹Data are rounded to no more than three significant digits; may not add to totals shown.

²Monthly consumption data by ingot makers, chemical plants, foundries, and miscellaneous manufacturers are estimated based on the monthly average of 2017 annual data.

TABLE 8
U.S. APPARENT CONSUMPTION OF COPPER¹

(Metric tons)

Period	Refined copper production ²	Copper in old scrap ³	Refined general imports ⁴	Refined exports ⁴	Stock change during period	Apparent consumption
2018: ^p						
January–April	355,000	48,800	296,000	42,600	49,100	609,000
April	82,000	12,300	63,900	13,700	17,700	127,000
May	87,600	12,200	64,600	13,800	8,150	142,000
June	84,700	12,100	66,200	11,300	21,000	131,000
July	91,900	12,200	59,500	11,200	13,500	139,000
August	93,900	12,200	48,300	15,700	-10,200	149,000
September	83,200	12,400	62,300	15,600	-30,900	173,000
October	89,200	13,400	54,400	31,000	-32,900	159,000
November	93,000	10,600	51,000	36,200	-25,400	144,000
December	91,200	12,000	44,800	12,400	-14,900	150,000
January–December	1,070,000	146,000	747,000	190,000	-22,500	1,800,000
2019:						
January	79,500	13,000	57,600	12,600	-13,800	151,000
February	64,800	12,200	37,000	13,100	-37,900	139,000
March	72,500	13,000	39,900	10,200	-56,500	172,000
April	79,400	12,700	65,000	13,500	-6,390	150,000
January–April	296,000	50,900	199,000	49,500	-115,000	612,000

^pPreliminary.

¹Data are rounded to no more than three significant digits; may not add to totals shown.

²Includes electrolytic production and electrolytically-refined copper from primary materials. All refined copper consumed in scrap form is included in "Copper in old scrap."

³Includes reported monthly production of copper from old scrap of copper-base, an estimate for annual reporters, and a monthly average of copper from non-copper-base materials based on 2017 annual data.

⁴Source: U.S. Census Bureau.

TABLE 9
CONSUMPTION OF PURCHASED COPPER-BASE SCRAP¹

(Metric tons, gross weight)

Period	Smelters and refineries		Ingot makers ²		Brass and wire-rod mills ³		Foundries, etc. ²		Total scrap used
	New scrap ^c	Old scrap	New scrap	Old scrap	New scrap	Old scrap	New scrap	Old scrap	
2018: ^p									
January–April	6,920	6,430	8,120	20,200	231,000	13,200	10,500	3,740	300,000
April	1,730	1,630	2,030	5,040	58,800	3,380	2,620	935	76,200
May	1,730	1,700	2,030	5,040	61,000	3,270	2,620	935	78,300
June	1,730	1,770	2,030	5,040	60,400	3,030	2,620	935	77,500
July	1,730	1,770	2,030	5,040	59,600	3,110	2,620	935	76,900
August	1,730	1,590	2,030	5,040	59,600	3,320	2,620	935	76,800
September	1,730	2,200	2,030	5,040	59,900	2,970	2,620	935	77,500
October	1,730	1,590	2,030	5,040	60,700	3,580	2,620	935	78,200
November	1,730	1,750	2,030	5,040	61,900	1,510	2,620	935	77,500
December	1,730	1,900	2,030	5,040	58,700	2,770	2,620	935	75,800
January–December	20,800	20,700	24,400	60,500	712,000	36,800	31,500	11,200	918,000
2019:									
January	1,730	2,160	2,030	5,040	60,100	3,610	2,620	935	78,300
February	1,730	1,710	2,030	5,040	59,900	3,260	2,620	935	77,200
March	1,730	2,340	2,030	5,040	60,200	3,410	2,620	935	78,300
April	1,730	1,990	2,030	5,040	59,400	3,450	2,620	935	77,200
January–April	6,920	8,190	8,120	20,200	240,000	13,700	10,500	3,740	311,000

^cEstimated. ^pPreliminary.

¹Data are rounded to no more than three significant digits; may not add to totals shown.

²Monthly data estimated based on the monthly average of 2017 annual data.

³Consumption at brass and wire-rod mills assumed equal to receipts.

TABLE 10
COPPER STOCKS AT END OF PERIOD¹

(Metric tons)

Period	Crude copper ²	Refined copper					LME ⁵	Total refined
		Refineries ³	Wire-rod mills ³	Brass mills ³	Other ⁴	Comex		
2018: ^P								
April	9,880	4,500	15,000	7,870	5,350	225,000	57,000	314,000
May	8,130	4,960	16,800	8,190	5,350	210,000	77,200	323,000
June	14,300	3,590	16,100	7,980	5,350	203,000	108,000	344,000
July	9,670	4,980	28,700	8,180	5,350	186,000	124,000	357,000
August	9,010	4,600	22,600	7,890	5,350	172,000	134,000	347,000
September	9,110	3,120	18,500	7,710	5,350	156,000	125,000	316,000
October	8,940	4,290	19,900	7,460	5,350	142,000	104,000	283,000
November	7,380	5,580	19,200	7,660	5,350	123,000	96,900	258,000
December	9,230	3,850	21,800	8,210	5,350	99,600	104,000	243,000
2019:								
January	9,550	2,700	19,700	8,370	5,350	76,100	117,000	229,000
February	10,200	2,750	32,300	8,270	5,350	51,200	91,300	191,000
March	15,000	2,970	24,800	8,400	5,350	38,700	54,400	135,000
April	8,860	6,630	28,100	8,370	5,350	31,100	48,600	128,000

^PPreliminary.

¹Data are rounded to no more than three significant digits; may not add to totals shown.

²Copper content of blister and anode.

³Stocks of refined copper as reported; no estimates are made for nonrespondents.

⁴Monthly estimates based on 2017 annual data, comprising stocks at ingot makers, chemical plants, foundries, and miscellaneous manufacturers.

⁵London Metal Exchange Ltd., U.S. warehouses.

TABLE 11
 AVERAGE PRICE OF COPPER IN THE UNITED STATES
 AND ON THE LONDON METAL EXCHANGE

(Cents per pound)

Period	U.S. producers cathode ¹	Comex first position ²	LME cash price Grade A
2018:			
April	314.129	308.754	310.169
May	312.402	306.402	309.409
June	318.152	311.714	315.436
July	285.626	279.126	283.387
August	276.087	269.387	273.936
September	276.107	269.232	273.044
October	282.498	275.935	281.918
November	281.598	275.098	280.882
December	279.026	272.338	276.397
Year	298.737	292.567	295.960
2019:			
January	275.588	268.238	269.052
February	293.129	285.566	284.754
March	297.974	289.974	292.581
April	299.820	292.007	292.317
January–April	291.628	283.946	284.676

¹Sum of "Comex high grade first position" and "NY dealer premium cathode."

²Listed as "Comex high grade first position."

Source: Platts Metals Week.

TABLE 12
AVERAGE BUYING PRICES FOR COPPER SCRAP

(Cents per pound)

Period	Brass mills No. 1 scrap	Refiners No. 2 scrap	Dealers (New York)	
			No. 2 scrap	Red brass turnings and borings
2018:				
April	299.33	274.36	209.02	158.00
May	297.50	271.68	208.59	158.55
June	301.67	274.14	214.17	160.57
July	269.95	239.48	198.93	151.29
August	261.00	229.07	187.80	145.43
September	261.16	228.50	178.45	141.47
October	267.65	239.80	187.50	141.00
November	267.50	240.10	185.00	130.00
December	264.52	238.72	187.50	141.00
Year	283.19	254.90	200.31	150.76
2019:				
January	260.33	235.19	180.79	139.00
February	278.66	252.39	189.82	140.42
March	282.69	253.31	202.50	145.00
April	284.26	252.17	206.50	147.00
January–April	276.49	248.27	194.90	142.86

Source: American Metal Market.

TABLE 13
U.S. IMPORTS FOR CONSUMPTION OF COPPER (UNMANUFACTURED), BY CLASS¹

(Metric tons, copper content)

Country or locality	Ore and concentrates ²			Matte, ash, and precipitates ³			Blister and anodes			Refined		
	2019			2019			2019			2019		
	2018	April	January–April	2018	April	January–April	2018	April	January–April	2018	April	January–April
Belgium	--	--	--	283	--	117	--	--	--	10,100	1,500	1,500
Bolivia	--	--	--	--	--	--	--	--	--	1,460	192	1,390
Canada	40	--	--	613	23	91	(4)	--	--	172,000	6,710	35,000
Chile	--	--	--	--	--	--	--	--	--	483,000	45,500	132,000
China	8	--	--	2	--	--	--	--	--	111	24	135
Congo (Brazzaville)	--	--	--	--	--	--	--	--	--	1,040	--	--
Congo (Kinshasa)	--	--	--	--	--	--	--	--	--	3,380	--	--
Finland	--	--	--	--	--	--	292	16	65	--	--	38
Germany	--	--	--	--	--	--	(4)	--	--	1,260	211	622
Japan	--	--	--	10	--	--	2	--	(4)	3,990	264	963
Malaysia	--	--	--	--	--	--	54	--	--	--	--	--
Mexico	32,100	3,110	5,620	539	(4)	59	--	--	--	63,100	9,870	25,100
Netherlands	--	--	--	115	--	--	2	--	3	(4)	--	--
Peru	--	--	--	--	--	--	--	--	--	19,100	499	3,000
Saudi Arabia	--	--	--	85	--	98	--	--	--	--	--	--
Zambia	--	--	--	--	--	--	--	--	--	18,900	616	616
Other	--	--	2	175	57	536	5	(4)	3	562	2	43
Total	32,200	3,110	5,620	1,820	80	900	355	17	71	778,000	65,400	201,000

-- Zero.

¹Data are rounded to no more than three significant digits; may not add to totals shown.

²Copper ore and concentrates only; excludes copper contained in ore and concentrates of other metals.

³Copper matte, ash, and precipitates only; excludes the copper content of mattes and ashes of other metals.

⁴Less than ½ unit.

Source: U.S. Census Bureau.

TABLE 14
U.S. EXPORTS OF COPPER (UNMANUFACTURED), BY CLASS¹

(Metric tons, copper content)

Country or locality	Ore and concentrates ²			Matte, ash, and precipitates ³			Blister and anodes			Refined		
	2019			2019			2019			2019		
	2018	April	January– April	2018	April	January– April	2018	April	January– April	2018	April	January– April
Belgium	20	80	82	2,150	78	765	226	18	142	--	--	29
Brazil	3,040	--	--	--	--	--	62	3	15	23	1	1
Bulgaria	2,990	--	8,300	--	--	--	--	--	--	--	--	--
Canada	17,200	1,400	4,430	19,500	1,660	6,520	4,320	198	1,620	37,300	4,930	10,700
China	47,500	--	--	1,650	--	89	210	--	64	47,600	--	1
Germany	4,810	--	--	1,130	58	247	282	21	125	2	--	1
Hong Kong	--	--	--	--	--	--	462	60	179	(4)	--	(4)
India	--	--	--	44	--	--	585	27	100	9	--	--
Italy	1	--	--	10	--	--	281	1	45	24	1	24
Japan	13,500	--	7,160	230	--	8	36	--	3	14	1	2
Korea, Republic of	4,690	--	4,570	817	--	74	1,680	116	576	2,200	1	62
Malaysia	545	--	5	413	--	--	178	20	79	62	--	4
Mexico	147,000	18,100	76,400	1,430	5	992	80	5	11	102,000	8,600	38,600
Philippines	1,180	2,310	2,310	--	--	--	42	8	25	(4)	--	--
Slovakia	--	--	--	526	78	274	--	--	--	--	--	--
Spain	10,500	1,310	2,790	210	--	--	101	--	20	1	--	--
Other	120	6	452	1,850	194	286	503	30	185	278	25	46
Total	253,000	23,200	107,000	30,000	2,070	9,250	9,060	508	3,190	190,000	13,600	49,500

-- Zero.

¹Data are rounded to no more than three significant digits; may not add to totals shown.

²Copper ore and concentrates only; excludes copper contained in ore and concentrates of other metals.

³Copper matte, ash, and precipitates only; excludes the copper content of mattes and ashes of other metals.

⁴Less than ½ unit.

Source: U.S. Census Bureau.

TABLE 15
U.S. IMPORTS FOR CONSUMPTION OF COPPER SCRAP¹

(Metric tons, gross weight)

Country or locality	Unalloyed			Alloyed		
	2018	2019		2018	2019	
		April	January– April		April	January– April
Bahamas	23	--	--	569	121	352
Canada	16,800	1,870	5,950	72,000	6,000	21,800
Chile	177	--	--	321	615	1,140
Colombia	367	20	79	926	80	443
Costa Rica	459	65	187	750	82	326
Dominican Republic	80	34	143	901	172	793
Guatemala	92	--	8	501	61	273
Honduras	5	9	13	589	26	148
Hong Kong	7	--	--	1,450	--	229
Japan	278	106	636	52	--	--
Mexico	10,800	1,100	4,350	38,600	3,110	13,700
Pakistan	567	--	--	--	--	--
Panama	1,020	75	148	640	38	152
Spain	--	--	--	637	--	--
Venezuela	2,540	--	--	646	50	131
Other	1,270	34	316	4,150	662	1,770
Total	34,500	3,310	11,800	123,000	11,000	41,300

-- Zero.

¹Data are rounded to no more than three significant digits; may not add to totals shown.

Source: U.S. Census Bureau.

TABLE 16
U.S. EXPORTS OF COPPER SCRAP¹

(Metric tons, gross weight)

Country or locality	Unalloyed							Alloyed				
	2018	2019						2018	2019			
		No. 1		No. 2		Other			Segregated		Unsegregated	
		April	January– April	April	January– April	April	January– April		April	January– April	April	January– April
Belgium	19,500	839	2,260	790	3,580	119	639	11,800	98	334	1,510	4,280
Canada	51,900	--	--	--	--	4,220	16,700	40,200	--	--	6,230	17,400
China	193,000	3,380	9,730	4,400	12,500	3,800	9,510	78,600	901	4,020	619	1,680
Germany	24,000	1,630	6,100	530	2,790	270	669	13,300	157	631	1,140	4,030
Greece	7,630	676	3,120	126	388	157	513	1,150	42	98	--	100
Hong Kong	20,700	853	2,540	467	2,830	812	3,300	23,600	1,580	4,340	1,900	6,580
India	14,000	228	1,080	226	1,010	729	2,570	34,300	2,590	9,920	842	3,710
Japan	29,300	401	2,280	754	5,700	98	1,450	26,700	486	2,990	1,380	6,070
Korea, Republic of	45,800	1,380	6,380	278	1,750	1,310	4,650	25,900	715	4,550	1,100	4,420
Malaysia	47,800	981	5,500	1,990	5,370	3,920	14,100	71,800	4,270	13,600	10,900	40,500
Netherlands	8,030	55	248	39	97	435	1,350	2,280	--	181	54	526
Pakistan	1,450	63	208	74	308	--	39	16,500	102	297	1,180	3,650
Spain	760	28	28	--	47	18	18	10,100	283	1,200	912	2,430
Taiwan	17,100	798	3,700	70	641	274	1,830	18,300	564	1,750	1,350	4,710
Thailand	3,000	26	269	139	460	95	251	11,100	20	41	647	5,530
Other	25,700	989	5,270	636	2,170	290	1,270	17,900	447	1,750	1,480	7,010
Total	509,000	12,300	48,700	10,500	39,600	16,500	58,900	403,000	12,300	45,700	31,200	113,000

-- Zero.

¹Data are rounded to no more than three significant digits; may not add to totals shown.

Source: U.S. Census Bureau.