

Mineral Industry Surveys

For information, contact:

Daniel M. Flanagan, Copper Commodity Specialist
 National Minerals Information Center
 U.S. Geological Survey
 989 National Center
 Reston, VA 20192
 Telephone: (703) 648-7726, Fax: (703) 648-7757
 Email: dflanagan@usgs.gov

Sheema Merchant (Data)
 Telephone: (703) 659-9944
 Fax: (703) 648-7975
 Email: smerchant@usgs.gov

Internet: <https://www.usgs.gov/centers/nmic>

COPPER IN FEBRUARY 2019

In February 2019, U.S. mine production of recoverable copper was 96,400 metric tons (t). The average daily mine production was 3,440 t, an increase of 9% from that in January and 8% higher than that in February 2018 (fig. 1). Year-to-date recoverable mine output through February 2019 was 194,000 t, a slight increase relative to the same period in 2018 (table 2).

Total refinery production in the United States was 68,100 t in February 2019; data for electrolytic and electrowon output, as well as refined production from scrap, are in table 4. The average daily total refinery production was 2,430 t, a decrease of 9% compared with that in January and 26% lower than that in February 2018 (fig. 1). Year-to-date refinery production through February 2019 was 151,000 t, a decline of 18% relative to the same period in 2018 (table 4).

Utah (Rio Tinto plc, 2019, p. 5). Year-to-date output through February 2019 was 52,400 t, 45% less than that through February 2018 (table 3).

Prices

The average February 2019 COMEX spot copper price was \$2.86 per pound, a 6% increase from \$2.68 per pound in January and 10% lower than \$3.17 per pound in February 2018 (fig. 2, table 11). The average price of New York dealers' number 2 scrap in February 2019 was \$1.90 per pound, 5% greater than \$1.81 per pound in January and 13% less than \$2.18 per pound in February 2018 (fig. 2, table 12).

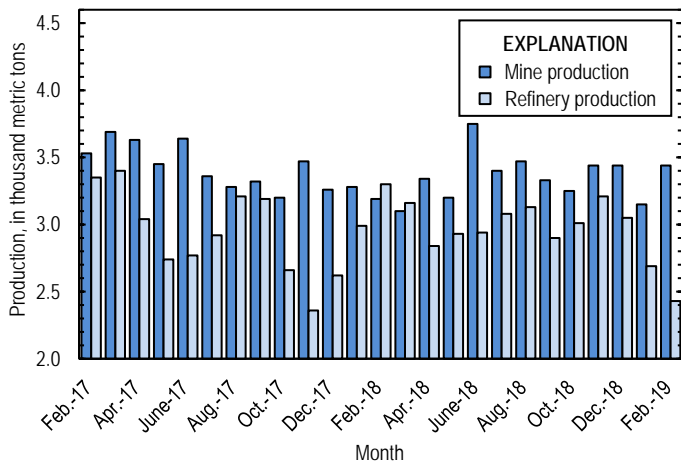


Figure 1. Average daily U.S. copper mine (recoverable) and refinery production from February 2017 through February 2019.

Smelter production in February 2019 was 17,700 t. The average daily smelter output was 632 t, 44% less than that in January and a decrease of 58% compared with the daily average in February 2018. Production in February 2019 was lower than usual owing to a planned maintenance shutdown of the anode furnace at Rio Tinto plc's (United Kingdom) Garfield Smelter in

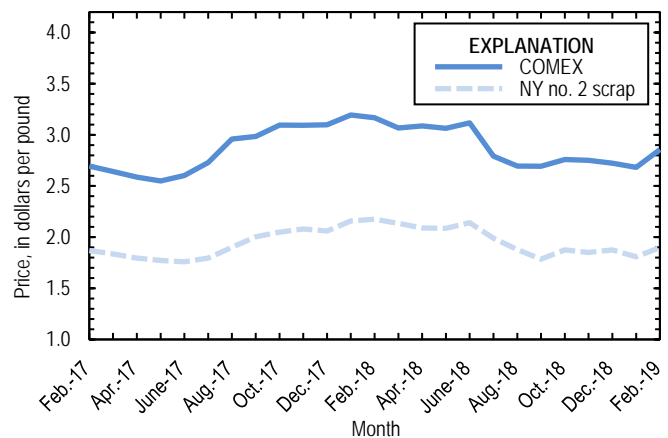


Figure 2. Monthly average COMEX copper price and New York no. 2 copper scrap price from February 2017 through February 2019. Sources: American Metal Market, Platts Metals Week.

Stocks

Refined copper stocks in the United States fell for the seventh consecutive month and totaled 195,000 t at the end of February 2019, a decrease of 15% from those in January, 31% lower than those in February 2018, and 45% less than the recent peak in July 2018. COMEX stocks fell by 33% and London Metal Exchange Ltd. stocks in U.S. warehouses declined by 22% compared with those at the end of January (fig. 3, table 10).

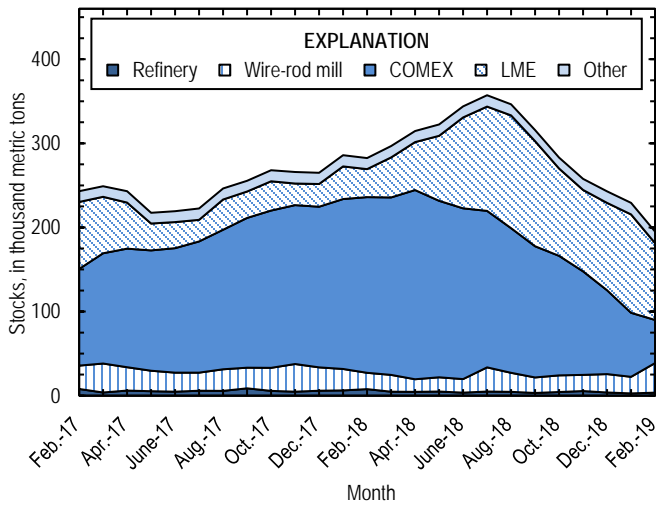


Figure 3. Monthly domestic refined copper stocks, by type, from February 2017 through February 2019. Sources: American Metal Market, London Metal Exchange Ltd., and U.S. Geological Survey.

Reference Cited

Rio Tinto plc, 2019, Rio Tinto releases first quarter production results: London, United Kingdom, Rio Tinto plc media release, April 16, 25 p. (Accessed May 20, 2019, at http://www.riotinto.com/documents/190416_Rio_Tinto_releases_first_quarter_production_results.pdf.)

List services and web feed subscribers are the first to receive notification of USGS minerals information publications and data releases. For information on how to subscribe, go to <https://www.usgs.gov/centers/nmic/minerals-information-publication-list-services>.

TABLE 1
SALIENT STATISTICS OF THE COPPER INDUSTRY IN THE UNITED STATES¹

(Metric tons of copper content, unless otherwise specified)

	Source table ²	2018 ^p	2019		
			January	February	January– February
Production:					
Primary:					
Mine, recoverable	(2)	1,220,000	97,700 ^r	96,400	194,000
Smelter	(3)	536,000	34,700	17,700	52,400
Refinery:					
Electrolytic, domestic and foreign	(4)	538,000	37,100	25,000	62,100
Electrowon	(4)	532,000	42,400 ^r	39,800	82,100
Total	(4)	1,070,000	79,500 ^r	64,900	144,000
Secondary recoverable copper:³					
Refineries	(5)	41,200	3,770	3,330	7,110
Ingot makers ⁴	(5)	56,800	4,730	4,730	9,470
Brass and wire-rod mills	(5)	652,000	55,700	55,100	111,000
Foundries, etc. ⁴	(5)	36,300	3,030	3,030	6,050
Consumption:					
Apparent	(8)	1,800,000	151,000 ^r	135,000	286,000
Refined (reported)	(7)	1,810,000	154,000	143,000	297,000
Purchased copper-base scrap (gross weight)	(9)	918,000	78,300	77,200	155,000
Stocks at end of period:					
Total refined	(10)	243,000	229,000	195,000	195,000
Blister, etc.	(10)	24,100	22,100	16,800	16,800
Price, U.S. producers cathode (cents per pound) ⁵	(11)	298.737	275.588	293.129	284.359
Imports:⁶					
Ore and concentrates	(13)	32,200	670	1,010	1,680
Refined	(13)	778,000	57,300	37,800	95,100
Exports:⁶					
Ore and concentrates	(14)	253,000	24,400	25,100	49,500
Refined	(14)	190,000	12,600	13,100	25,700

^pPreliminary. ^rRevised.

¹Data are rounded to no more than three significant digits, except prices; may not add to totals shown.

²Numbers in parentheses refer to the tables where these data are located.

³Copper recovered from copper-base scrap only.

⁴Estimated based on the monthly average of 2017 annual data.

⁵Source: Platts Metals Week.

⁶Source: U.S. Census Bureau.

TABLE 2
MINE PRODUCTION OF RECOVERABLE COPPER IN THE UNITED STATES¹

(Metric tons)

Period	Recoverable copper			Contained copper		
	Arizona	Others ²	Total	Electrowon	Concentrates ³	Total
2018:^p						
January–February	130,000	60,600	191,000	87,400	108,000	195,000
February	61,500	27,700	89,200	40,600	50,700	91,300
March	68,200	27,900	96,000	44,400	53,700	98,000
April	65,400	34,700	100,000	43,200	58,800	102,000
May	69,300	29,800	99,200	46,000	55,200	101,000
June	70,600	41,900	113,000	44,900	70,100	115,000
July	66,800	38,500	105,000	46,000	61,400	107,000
August	69,100	38,600	108,000	45,500	64,600	110,000
September	63,000	36,800	99,800	43,000	59,100	102,000
October	64,000	36,900	101,000	43,100	59,800	103,000
November	65,200	38,000	103,000	43,000	62,400	105,000
December	69,300	37,300	107,000	45,800	63,000	109,000
January–December	801,000	421,000	1,220,000	532,000	716,000	1,250,000
2019:						
January	67,800 ^r	29,900	97,700 ^r	42,400 ^r	57,400 ^r	99,800 ^r
February	62,900	33,500	96,400	39,800	58,700	98,500
January–February	131,000	63,400	194,000	82,100	116,000	198,000

^pPreliminary. ^rRevised.

¹Data are rounded to no more than three significant digits; may not add to totals shown.

²Includes production from Michigan, Missouri, Montana, Nevada, New Mexico, and Utah.

³Includes copper content of precipitates and other metal concentrates.

TABLE 3
COPPER PRODUCED AT SMELTERS IN
THE UNITED STATES^{1,2}

(Metric tons, copper content)

Period	Anode production
2018: ^p	
January–February	96,000
February	42,200
March	41,500
April	44,800
May	39,000
June	45,700
July	47,500
August	46,100
September	40,800
October	48,200
November	45,300
December	40,600
January–December	536,000
2019:	
January	34,700
February	17,700
January–February	52,400

^pPreliminary.

¹Includes blister and copper anode from primary or secondary sources.

²Data are rounded to no more than three significant digits; may not add to totals shown.

TABLE 4
PRODUCTION OF REFINED COPPER, BY SOURCE AND METHOD OF RECOVERY¹

(Metric tons)

Period	Primary materials			Scrap	Total refined
	Electrolytically refined ²	Electrowon	Total		
2018: ^p					
January–February	91,300	87,400	179,000	6,470	185,000
February	48,500	40,600	89,000	3,260	92,300
March	50,400	44,400	94,800	3,220	98,000
April	38,700	43,200	82,000	3,260	85,200
May	41,600	46,000	87,600	3,330	90,900
June	39,800	44,900	84,700	3,400	88,000
July	45,900	46,000	91,900	3,390	95,300
August	48,400	45,500	93,900	3,220	97,100
September	40,200	43,000	83,200	3,810	87,000
October	46,100	43,100	89,200	4,180	93,400
November	50,000	43,000	93,000	3,370	96,400
December	45,300	45,800	91,200	3,520	94,700
January–December	538,000	532,000	1,070,000	41,200	1,110,000
2019:					
January	37,100	42,400 ^r	79,500 ^r	3,770	83,200 ^r
February	25,000	39,800	64,900	3,330	68,100
January–February	62,100	82,100	144,000	7,110	151,000

^pPreliminary. ^rRevised.

¹Data are rounded to no more than three significant digits; may not add to totals shown.

²From domestic and foreign source materials.

TABLE 5
COPPER RECOVERABLE IN UNALLOYED AND ALLOYED FORM FROM PURCHASED COPPER-BASE SCRAP¹

(Metric tons, copper content)

Period	Refineries ²		Ingot makers ³		Brass and wire-rod mills		Foundries, etc. ³		Total ⁴
	New scrap ⁶	Old scrap	New scrap	Old scrap	New scrap	Old scrap	New scrap	Old scrap	
2018: ^P									
January–February	3,350	3,120	1,420	8,050	101,000	6,240	4,390	1,660	129,000
February	1,680	1,580	710	4,020	50,000	2,940	2,200	830	64,000
March	1,680	1,540	710	4,020	46,800	3,350	2,200	830	61,100
April	1,680	1,580	710	4,020	50,800	3,270	2,200	830	65,100
May	1,680	1,650	710	4,020	53,000	3,180	2,200	830	67,300
June	1,680	1,720	710	4,020	52,400	2,960	2,200	830	66,500
July	1,680	1,710	710	4,020	51,600	3,060	2,200	830	65,800
August	1,680	1,540	710	4,020	51,600	3,220	2,200	830	65,700
September	1,680	2,130	710	4,020	51,900	2,850	2,200	830	66,300
October	1,680	2,500	710	4,020	52,700	3,490	2,200	830	68,100
November	1,680	1,690	710	4,020	53,900	1,470	2,200	830	66,500
December	1,680	1,840	710	4,020	50,800	2,700	2,200	830	64,800
January–December	20,100	21,000	8,520	48,300	617,000	35,800	26,400	9,960	787,000
2019:									
January	1,680	2,100	710	4,020	52,100	3,520	2,200	830	67,200
February	1,680	1,660	710	4,020	51,900	3,170	2,200	830	66,200
January–February	3,350	3,750	1,420	8,050	104,000	6,690	4,390	1,660	133,000

⁶Estimated; ^PPreliminary.

¹Data are rounded to no more than three significant digits; may not add to totals shown.

²Electrolytically refined and fire refined from scrap based on source of material at smelter or refinery level.

³Monthly data estimated based on the monthly average of 2017 annual data.

⁴Does not include an estimate, based on reported 2017 annual data, of 3,190 tons per month from new scrap and 2,560 tons per month from old scrap of copper recovered from scrap other than copper-base.

TABLE 6
 PRODUCTION, SHIPMENTS, AND STOCKS OF BRASS AND WIRE-ROD SEMIFABRICATES¹

(Metric tons, gross weight)

Period	Production		Shipments		Stocks, end of period	
	Brass mills	Wire-rod mills	Brass mills	Wire-rod mills	Brass mills	Wire-rod mills
2018: ^p						
January–February	146,000	221,000	147,000	222,000	28,800	26,400
February	72,700	107,000	73,400	107,000	28,800	26,400
March	74,300	115,000	74,000	117,000	29,200	24,200
April	73,600	103,000	73,600	111,000	29,200	16,400
May	73,600	115,000	74,000	113,000	28,800	18,400
June	73,900	118,000	73,800	114,000	28,900	22,200
July	73,400	99,300	73,700	102,000	28,700	19,600
August	73,800	124,000	74,200	120,000	28,300	23,900
September	73,500	110,000	73,300	111,000	28,400	23,000
October	74,300	114,000	73,900	120,000	28,800	16,900
November	73,500	113,000	73,400	108,000	28,900	21,300
December	73,800	97,700	73,000	92,100	29,700	27,000
January–December	884,000	1,330,000	884,000	1,330,000	29,700	27,000
2019:						
January	74,200	113,000	73,800	116,000	30,000	23,700
February	73,500	103,000	73,600	110,000	29,900	17,100
January–February	148,000	216,000	147,000	226,000	29,900	17,100

^pPreliminary.

¹Data are rounded to no more than three significant digits; may not add to totals shown.

TABLE 7
CONSUMPTION OF REFINED COPPER¹

(Metric tons)

Period	Brass mills	Wire-rod mills	Other plants ²	Total
2018: ^p				
January–February	69,700	221,000	10,300	301,000
February	35,100	107,000	5,170	147,000
March	34,900	115,000	5,170	155,000
April	35,100	105,000	5,170	145,000
May	34,900	115,000	5,170	155,000
June	34,900	106,000	5,170	146,000
July	34,800	104,000	5,170	144,000
August	35,100	121,000	5,170	161,000
September	35,100	122,000	5,170	163,000
October	34,900	112,000	5,170	152,000
November	34,700	113,000	5,170	153,000
December	34,600	98,000	5,170	138,000
January–December	419,000	1,330,000	62,100	1,810,000
2019:				
January	34,900	114,000	5,170	154,000
February	34,700	103,000	5,170	143,000
January–February	69,600	217,000	10,300	297,000

^pPreliminary.

¹Data are rounded to no more than three significant digits; may not add to totals shown.

²Monthly consumption data by ingot makers, chemical plants, foundries, and miscellaneous manufacturers are estimated based on the monthly average of 2017 annual data.

TABLE 8
U.S. APPARENT CONSUMPTION OF COPPER¹

(Metric tons)

Period	Refined copper production ²	Copper in old scrap ³	Refined general imports ⁴	Refined exports ⁴	Stock change during period	Apparent consumption
2018: ^p						
January–February	179,000	24,200	159,000	16,800	17,500	327,000
February	89,000	11,900	77,500	7,270	-2,750	174,000
March	94,800	12,300	75,200	12,100	14,000	156,000
April	82,000	12,300	62,400	13,700	17,700	125,000
May	87,600	12,200	64,600	13,800	8,150	142,000
June	84,700	12,100	66,200	11,200	21,000	131,000
July	91,900	12,200	59,500	11,300	13,500	139,000
August	93,900	12,200	48,300	15,700	-10,200	149,000
September	83,200	12,400	62,300	15,600	-30,900	173,000
October	89,200	13,400	54,400	31,000	-32,900	159,000
November	93,000	10,600	51,000	36,200	-25,400	144,000
December	91,200	12,000	44,800	12,400	-14,900	150,000
January–December	1,070,000	146,000	747,000	190,000	-22,500	1,800,000
2019:						
January	79,500 ^r	13,000	57,600	12,600	-13,800	151,000 ^r
February	64,900	12,200	37,000	13,100	-33,900	135,000
January–February	144,000	25,300	94,600	25,700	-47,700	286,000

^pPreliminary. ^rRevised.

¹Data are rounded to no more than three significant digits; may not add to totals shown.

²Includes electrolytic production and electrolytically-refined copper from primary materials. All refined copper consumed in scrap form is included in "Copper in old scrap."

³Includes reported monthly production of copper from old scrap of copper-base, an estimate for annual reporters, and a monthly average of copper from non-copper-base materials based on 2017 annual data.

⁴Source: U.S. Census Bureau.

TABLE 9
CONSUMPTION OF PURCHASED COPPER-BASE SCRAP¹

(Metric tons, gross weight)

Period	Smelters and refineries		Ingot makers ²		Brass and wire-rod mills ³		Foundries, etc. ²		Total scrap used
	New scrap ^c	Old scrap	New scrap	Old scrap	New scrap	Old scrap	New scrap	Old scrap	
2018: ^p									
January–February	3,460	3,210	4,060	10,100	117,000	6,390	5,250	1,870	151,000
February	1,730	1,630	2,030	5,040	57,900	3,010	2,620	935	74,900
March	1,730	1,590	2,030	5,040	54,700	3,450	2,620	935	72,100
April	1,730	1,630	2,030	5,040	58,800	3,380	2,620	935	76,200
May	1,730	1,700	2,030	5,040	61,000	3,270	2,620	935	78,300
June	1,730	1,770	2,030	5,040	60,400	3,030	2,620	935	77,500
July	1,730	1,770	2,030	5,040	59,600	3,110	2,620	935	76,900
August	1,730	1,590	2,030	5,040	59,600	3,320	2,620	935	76,800
September	1,730	2,200	2,030	5,040	59,900	2,970	2,620	935	77,500
October	1,730	1,590	2,030	5,040	60,700	3,580	2,620	935	78,200
November	1,730	1,750	2,030	5,040	61,900	1,510	2,620	935	77,500
December	1,730	1,900	2,030	5,040	58,700	2,770	2,620	935	75,800
January–December	20,800	20,700	24,400	60,500	712,000	36,800	31,500	11,200	918,000
2019:									
January	1,730	2,160	2,030	5,040	60,100	3,610	2,620	935	78,300
February	1,730	1,710	2,030	5,040	59,900	3,260	2,620	935	77,200
January–February	3,460	3,870	4,060	10,100	120,000	6,870	5,250	1,870	155,000

^cEstimated. ^pPreliminary.

¹Data are rounded to no more than three significant digits; may not add to totals shown.

²Monthly data estimated based on the monthly average of 2017 annual data.

³Consumption at brass and wire-rod mills assumed equal to receipts.

TABLE 10
COPPER STOCKS AT END OF PERIOD¹

(Metric tons)

Period	Crude copper ²	Refined copper					Total refined	
		Refineries ³	Wire-rod mills ³	Brass mills ³	Other ⁴	Comex		LME ⁵
2018:^P								
February	14,600	7,690	19,400	7,880	5,350	209,000	33,200	283,000
March	9,010	4,790	19,900	8,000	5,350	211,000	47,600	297,000
April	9,880	4,500	15,000	7,870	5,350	225,000	57,000	314,000
May	8,130	4,960	16,800	8,190	5,350	210,000	77,200	323,000
June	14,300	3,590	16,100	7,980	5,350	203,000	108,000	344,000
July	9,670	4,980	28,700	8,180	5,350	186,000	124,000	357,000
August	9,010	4,600	22,600	7,890	5,350	172,000	134,000	347,000
September	9,110	3,120	18,500	7,710	5,350	156,000	125,000	316,000
October	8,940	4,290	19,900	7,460	5,350	142,000	104,000	283,000
November	7,380	5,580	19,200	7,660	5,350	123,000	96,900	258,000
December	24,100	3,850	21,800	8,210	5,350	99,600	104,000	243,000
2019:								
January	22,100	2,700	19,700	8,370	5,350	76,100	117,000	229,000
February	16,800	3,510	35,300	8,340	5,350	51,200	91,300	195,000

^PPreliminary.

¹Data are rounded to no more than three significant digits; may not add to totals shown.

²Copper content of blister and anode.

³Stocks of refined copper as reported; no estimates are made for nonrespondents.

⁴Monthly estimates based on 2017 annual data, comprising stocks at ingot makers, chemical plants, foundries, and miscellaneous manufacturers.

⁵London Metal Exchange Ltd., U.S. warehouses.

TABLE 11
 AVERAGE PRICE OF COPPER IN THE UNITED STATES
 AND ON THE LONDON METAL EXCHANGE

(Cents per pound)

Period	U.S. producers cathode ¹	Comex first position ²	LME cash price Grade A
2018:			
February	322.495	316.745	317.574
March	312.083	306.683	308.227
April	314.129	308.754	310.169
May	312.402	306.402	309.409
June	318.152	311.714	315.436
July	285.626	279.126	283.387
August	276.087	269.387	273.936
September	276.107	269.232	273.044
October	282.498	275.935	281.918
November	281.598	275.098	280.882
December	279.026	272.338	276.397
Year	298.737	292.567	295.960
2019:			
January	275.588	268.238	269.052
February	293.129	285.566	284.754
January-February	284.359	276.902	276.903

¹Sum of "Comex high grade first position" and "NY dealer premium cathode."

²Listed as "Comex high grade first position."

Source: Platts Metals Week.

TABLE 12
AVERAGE BUYING PRICES FOR COPPER SCRAP

(Cents per pound)

Period	Brass mills No. 1 scrap	Refiners No. 2 scrap	Dealers (New York)	
			No. 2 scrap	Red brass turnings and borings
2018:				
February	304.63	275.68	217.50	161.00
March	295.18	268.32	213.50	160.00
April	299.33	274.36	209.02	158.00
May	297.50	271.68	208.59	158.55
June	301.67	274.14	214.17	160.57
July	269.95	239.48	198.93	151.29
August	261.00	229.07	187.80	145.43
September	261.16	228.50	178.45	141.47
October	267.65	239.80	187.50	141.00
November	267.50	240.10	185.00	130.00
December	264.52	238.72	187.50	141.00
Year	283.19	254.90	200.31	150.76
2019:				
January	260.33	235.19	180.79	139.00
February	278.66	252.39	189.82	140.42
January–February	269.50	243.79	185.31	139.71

Source: American Metal Market.

TABLE 13
U.S. IMPORTS FOR CONSUMPTION OF COPPER (UNMANUFACTURED), BY CLASS¹

(Metric tons, copper content)

Country or locality	Ore and concentrates ²			Matte, ash, and precipitates ³			Blister and anodes			Refined		
	2019			2019			2019			2019		
	2018	February	January–February	2018	February	January–February	2018	February	January–February	2018	February	January–February
Belgium	--	--	--	283	--	117	--	--	--	10,100	--	--
Bolivia	--	--	--	--	--	--	--	--	--	1,460	--	1,030
Canada	40	--	--	570	10	54	(4)	--	--	172,000	8,630	18,700
Chile	--	--	--	--	--	--	--	--	--	483,000	23,800	61,400
China	8	--	--	2	--	--	--	--	--	111	54	62
Congo (Brazzaville)	--	--	--	--	--	--	--	--	--	1,040	--	--
Congo (Kinshasa)	--	--	--	--	--	--	--	--	--	3,380	--	--
Finland	--	--	--	--	--	--	292	16	16	--	37	38
Germany	--	--	--	--	--	--	(4)	--	--	1,260	195	329
Japan	--	--	--	10	--	--	2	--	(4)	3,990	177	398
Malaysia	--	--	--	--	--	--	54	--	--	--	--	--
Mexico	32,200	1,010	1,680	539	20	59	--	--	--	63,000	4,890	11,100
Netherlands	--	--	--	115	--	--	2	--	--	(4)	--	--
Peru	--	--	--	--	--	--	--	--	--	19,100	--	2,000
Saudi Arabia	--	--	--	85	58	58	--	--	--	--	--	--
South Africa	--	--	--	--	--	--	--	--	--	963	--	--
Zambia	--	--	--	--	--	--	--	--	--	17,900	--	--
Other	--	2	2.00	73	--	(4)	5	1	2	561	(4)	41
Total	32,200	1,010	1,680	1,680	87	287	355	16	17	778,000	37,800	95,100

-- Zero.

¹Data are rounded to no more than three significant digits; may not add to totals shown.

²Copper ore and concentrates only; excludes copper contained in ore and concentrates of other metals.

³Copper matte, ash, and precipitates only; excludes the copper content of mattes and ashes of other metals.

⁴Less than ½ unit.

Source: U.S. Census Bureau.

TABLE 14
U.S. EXPORTS OF COPPER (UNMANUFACTURED), BY CLASS¹

(Metric tons, copper content)

Country or locality	Ore and concentrates ²			Matte, ash, and precipitates ³			Blister and anodes			Refined		
	2019			2019			2019			2019		
	2018	February	January–February	2018	February	January–February	2018	February	January–February	2018	February	January–February
Belgium	20	--	(4)	2,170	175	410	226	53	105	--	29	29
Brazil	3,040	--	--	--	--	--	62	--	12	23	--	--
Bulgaria	2,990	5,250	5,250	--	--	--	--	--	--	--	--	--
Canada	17,200	885	1,920	19,500	1,160	3,530	4,320	384	1,120	37,400	3,620	5,170
China	47,500	--	--	1,650	69	71	210	21	33	47,600	(4)	(4)
Germany	4,810	--	--	1,130	67	143	282	82	104	2	(4)	(4)
Hong Kong	--	--	--	--	--	--	462	60	99	(4)	--	--
India	--	--	--	44	--	--	585	--	47	9	--	--
Italy	1	--	--	10	--	--	281	21	22	24	21	21
Japan	13,500	--	4,890	230	--	--	36	1	3	14	(4)	(4)
Korea, Republic of	4,690	--	--	817	17	74	1,680	130	328	2,200	61	61
Malaysia	545	--	5	413	--	--	178	40	40	62	--	1
Mexico	147,000	18,500	35,500	1,430	--	1	80	3	5	102,000	9,340	20,400
Philippines	1,180	--	--	--	--	--	42	5	17	(4)	--	--
Slovakia	--	--	--	526	78	137	--	--	--	--	--	--
Spain	10,500	--	1,480	210	--	--	101	--	20	1	--	--
Other	120	441	446	1,810	5	90	503	90	121	278	1	10
Total	253,000	25,100	49,500	29,900	1,570	4,460	9,060	889	2,080	190,000	13,100	25,700

-- Zero.

¹Data are rounded to no more than three significant digits; may not add to totals shown.

²Copper ore and concentrates only; excludes copper contained in ore and concentrates of other metals.

³Copper matte, ash, and precipitates only; excludes the copper content of mattes and ashes of other metals.

⁴Less than ½ unit.

Source: U.S. Census Bureau.

TABLE 15
U.S. IMPORTS FOR CONSUMPTION OF COPPER SCRAP¹

(Metric tons, gross weight)

Country or locality	Unalloyed			Alloyed		
	2019			2019		
	2018	February	January–February	2018	February	January–February
Bahamas	23	--	--	569	84	167
Canada	16,800	1,100	2,640	72,000	5,410	9,640
Chile	177	--	--	321	10	21
Colombia	367	--	40	926	58	270
Costa Rica	459	35	67	750	50	159
Dominican Republic	80	75	110	901	241	446
Guatemala	92	8	8	501	71	207
Honduras	5	4	4	589	40	40
Hong Kong	7	--	--	1,450	52	229
Japan	278	154	232	52	--	--
Mexico	10,800	1,110	2,170	38,600	3,420	6,850
Pakistan	567	--	--	--	--	--
Panama	1,020	25	48	640	33	73
Spain	--	--	--	637	--	--
Venezuela	2,540	--	--	646	47	56
Other	1,290	129	234	4,150	301	624
Total	34,600	2,640	5,550	123,000	9,810	18,800

-- Zero.

¹Data are rounded to no more than three significant digits; may not add to totals shown.

Source: U.S. Census Bureau.

TABLE 16
U.S. EXPORTS OF COPPER SCRAP¹

(Metric tons, gross weight)

Country or locality	Unalloyed							Alloyed				
	2018	2019						2018	2019			
		No. 1		No. 2		Other			Segregated		Unsegregated	
		January– February	February	January– February	February	January– February	February		January– February	February	January– February	February
Belgium	19,500	450	1,090	1,130	2,220	121	318	11,800	98	138	705	1,700
Canada	51,900	--	--	--	--	3,800	8,120	38,700	--	--	3,350	6,390
China	195,000	1,540	3,060	2,610	3,620	2,290	3,900	80,000	1,380	2,180	549	934
Germany	23,900	926	2,340	647	1,720	32	300	13,300	164	242	799	1,630
Greece	7,620	879	1,780	38	140	98	297	1,170	--	38	--	40
Hong Kong	20,200	624	1,190	691	1,820	953	1,680	23,000	901	1,270	1,850	2,750
India	14,000	414	535	266	419	788	1,150	34,400	2,060	4,010	941	1,930
Japan	29,100	709	1,400	1,850	3,590	236	681	26,700	990	2,030	1,520	3,390
Korea, Republic of	45,300	1,770	3,290	303	1,200	1,400	2,120	25,900	969	2,350	1,090	2,420
Malaysia	47,100	1,760	3,000	1,250	2,020	3,640	6,640	71,800	3,190	5,610	9,210	18,000
Netherlands	8,030	20	96	57	57	273	599	2,280	114	114	117	235
Pakistan	1,760	83	105	92	176	--	39	16,500	81	175	628	1,400
Spain	796	--	--	42	47	--	--	10,100	307	611	519	979
Taiwan	17,000	969	1,660	97	439	349	890	18,200	203	493	1,320	2,190
Thailand	3,200	38	176	45	173	85	85	11,300	--	--	2,250	3,250
Other	25,700	2,030	3,410	388	863	297	535	17,900	492	1,070	1,990	3,560
Total	510,000	12,200	23,100	9,510	18,500	14,400	27,400	403,000	10,900	20,300	26,800	50,800

-- Zero.

¹Data are rounded to no more than three significant digits; may not add to totals shown.

Source: U.S. Census Bureau.