

# USGS National Hydrography Dataset Newsletter

Vol. 18, No. 8, August 2019

[National Hydrography Dataset Partner Support Restructure](#)

[Tips and Tricks for Styling NHD and WBD Web Map](#)

[NHD, WBD, and NHDPlus HR Status Updates](#)

[NHDPlus High Resolution Beta Production Status](#)

[NHD and NHDPlus HR VisibilityFilter Cartographic Generalization Status](#)

[WBD 4-digit Improvement Status](#)

[NHD Training – September 2019](#)

[Photo of the Month](#)

[Hydrography Quiz](#)

[Upcoming USGS Hydrography Calls, Trainings, and Meetings](#)

[Services](#)

## National Hydrography Dataset Partner Support Restructure

*Contacts: Tatyana DiMascio ([tdimascio@usgs.gov](mailto:tdimascio@usgs.gov)), Al Rea ([ahrea@usgs.gov](mailto:ahrea@usgs.gov)), Becci Anderson ([rdanderson@usgs.gov](mailto:rdanderson@usgs.gov)),*

From the inception of the National Hydrography Dataset (NHD), USGS National Hydrography has continually evolved to stay current with hydrography users' changing needs. With the addition of the NHDPlus High Resolution (NHDPlus HR) dataset and the Markup Application, the program is now more multifaceted than when Partner Support was first conceptualized. Partner Support is being restructured to simplify the roles within the group to better serve our users.

**Starting on October 1, 2019, Partner Support will implement a National NHD POC model, replacing the original Regional POC model.** The National NHD POC will serve as the primary support and communication point of contact. The National NHD POC will handle NHD partner coordination, markup review coordination, respond to inquiries submitted through [nhd@usgs.gov](mailto:nhd@usgs.gov), and facilitate technical support for NHD jobs. This role will work with others on the Partner Support team and National Map Liaisons to meet the needs of our partners and the public.

### Why?

The new NHD Stewardship Support model provides a simplified and nationally consistent structure which will allow us to deliver better support and coverage to our partners. Internally, it will provide a distributed workload for the Partner Support team to be able to address NHD needs in a timely manner.

### What Do You Need to Do?

- Include the National NHD POC ([nhd@usgs.gov](mailto:nhd@usgs.gov)) on all NHD partner coordination events and communications nation-wide.

- Address all NHD communications directly to Joel Skalet through [nhd@usgs.gov](mailto:nhd@usgs.gov). You may include previous regional NHD POCs if necessary to support the transition.
- Address all markup coordination to the National NHD POC through [nhd@usgs.gov](mailto:nhd@usgs.gov). You may continue to include Tatyana DiMascio if necessary to support role transition.

### NGTOC Partner Support Roles for FY20

<b>Role</b>	<b>Lead Contact</b>	<b>Email</b>
National NHD POC	Joel Skalet	nhd@usgs.gov
National WBD POC	Lily Niknami	lniknami@usgs.gov
NHDPlus HR Beta QC POC	Tatyana DiMascio	tdimascio@usgs.gov
Markup Tools Technical Support POC	Tatyana DiMascio	markup@usgs.gov
Hydrography Data Community (HDC) POC	Lily Niknami	lniknami@usgs.gov
Hydrography Event Management (HEM) POC	Michael Tinker	hem@usgs.gov
Hydrography Maintenance Portal (HMP) POC	Michael Tinker	mdtinker@usgs.gov
NHD Technical Exchange Meetings (TEMs) POC	Tatyana DiMascio	tdimascio@usgs.gov
NHD Training POC	William Smith	wjsmith@usgs.gov
GeoConflation POC	David Anderson	nhd-gct@usgs.gov
NHD Update POC	Alex Kaufman	akaufman@usgs.gov
NHD Utilities POC	Alex Kaufman	akaufman@usgs.gov

# Tips and Tricks for Styling NHD/WBD Services

Where can I use this new functionality?

Did you know you can now change symbology and labeling to our REST web service for NHD and WBD?

	AGOL	PRO - NHD	PRO - WBD	ArcMap
Change Symbology	✓	✓*	✓*	✗
Change Labeling	✓	✓*	✗	✗
Access Attributes	✓	✓*	✓*	✗
ID Attributes	✓	✓	✓	✓

Remember...

## In ArcGIS Online (AGOL)

- Access symbology and labeling for each layer.

Change Style

- 1 Choose an attribute to show
- 2 Select a drawing style

Options: Types (Unique symbols), Counts and Amounts (Color)

Buttons: SELECT, DONE, CANCEL

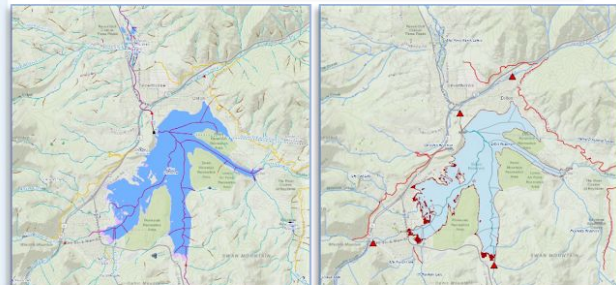
- Enable Pop-ups for each layer to ID attributes

## In ArcGIS Pro

- Drag and drop individual sublayers from the Catalog Pane into the map.

Sublayers:

- Area - Large Scale
- Area - Small Scale
- Flow Direction
- Flowline - Large Scale
- Flowline - Small Scale



\*adding the WMS as a whole will not allow you to change symbology, labeling or access attributes.

## Need Help Adding a Web Service?

The National Map Products and Services: [Lesson 5 – Using the National Map Web Services in ArcMap](#)

ArcGIS Online: [Add items](#) [Add items from the web](#)

ArcGIS Pro: [Connect to a GIS server](#)

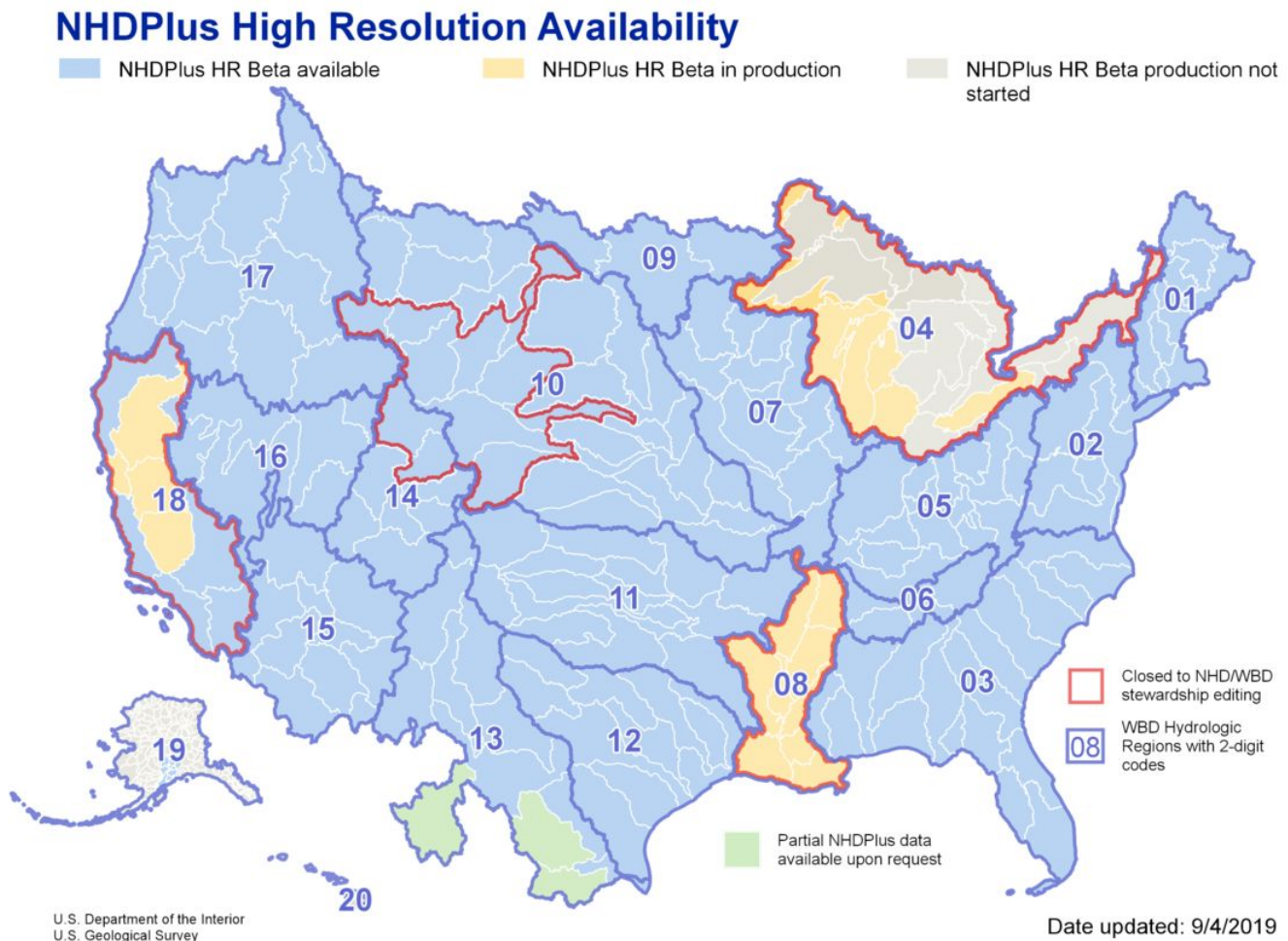
---

## NHD, WBD, and NHDPlus HR Status Updates

### NHDPlus High Resolution Beta Production Status

Contact: Karen Adkins ([kadkins@usgs.gov](mailto:kadkins@usgs.gov)), Hayley Thompson ([hnthompson@usgs.gov](mailto:hnthompson@usgs.gov))

The map below provides an overview of NHDPlus HR availability. This status map is updated frequently on the [NHDPlus HR webpage](#).



- Red outline - These areas are currently closed to NHD and WBD editing. Please contact the [NHD/WBD Point of Contact](#) in your area for more information.
- Blue areas - NHDPlus HR Beta is currently available and Beta QC is either in process or completed for these areas. Please see the [NHDPlus HR Beta QC](#) section of the [NHDPlus HR webpage](#).
- Yellow areas - The NHDPlus HR Beta is in production and the USGS is currently seeking volunteers for the upcoming Beta QC for these areas. Please see the [NHDPlus HR Beta QC](#) section of the [NHDPlus HR webpage](#) for more information. Please contact the National NHD Point of Contact (Joel Skalet,

[nhd@usgs.gov](mailto:nhd@usgs.gov)) or National WBD Point of Contact (Lily Niknami, [lniknami@usgs.gov](mailto:lniknami@usgs.gov)) for more information on the status of NHD and WBD editing in these areas.

- Gray areas - NHDPlus HR Beta will be produced at a later date. These areas are currently open for NHD and WBD editing.
- Green areas - The NHDPlus HR Beta was produced using contributing areas in Mexico to improve the NHDPlus HR Beta along the Rio Grande River. Minimal hydrography was included in the Beta build but will be improved when the areas are refreshed. The NHDPlus HR Beta production data with minimal hydrography content is available upon request.

## NHD and NHDPlus HR VisibilityFilter Cartographic Generalization Status

*Contact: Travis Landauer ([tlandauer@USGS.gov](mailto:tlandauer@USGS.gov))*

**The VisibilityFilter attribute population has been completed for CONUS!** The VisibilityFilter attribute allows vector data features to be filtered to eight approximate map scales. A given VisibilityFilter coded-value indicates that the feature is appropriate for use at approximately the defined scale and at all larger scales. Two separate methods to display NHD features with the VisibilityFilter attribute for NHDFlowline, NHDWaterbody, NHDArea, and NHDLine feature classes are described on the [VisibilityFilter webpage](#).

### Future Work

- 04 - working with WBD group on newly created hydrologic unitsCs on the Canadian side of the Great Lakes
- Regions 19, 20, 21

## WBD 4-digit Improvement Status

*Contact: Kimberly Jones ([kjones@usgs.gov](mailto:kjones@usgs.gov)), Lily Niknami ([lniknami@usgs.gov](mailto:lniknami@usgs.gov))*

### WBD 4-digit Improvement - Work Completed

- Regions - 01, 02, 03, 05, 06, 07, 08, 09, 10, 11, 12, 13, 14, 15, 16, 17, 18 and 20
- Pilot areas - 0903, 041504, 190204, and 190205
- Mexico contributing hydrologic units in Region 13
- Region 19 - 19020301, 19020302, 19020202, 19020601, and 19020602, 19020800

### WBD 4-digit Improvement - Currently In Work

- Region 04
- Canada contributing hydrologic units in Region 04

### WBD 4-digit Improvement - Future Work

- Regions - 19, 21 and 22

---

## NHD Training – September 2019

Contact Joel Skalet ([jjskalet@usgs.gov](mailto:jjskalet@usgs.gov)) or Bill Smith ([wjsmith@usgs.gov](mailto:wjsmith@usgs.gov))

NHD Update Toolbar Training is scheduled for September 2019. You may check the Events Calendar on the Hydrography Data Community (HDC) site for details.

Principal Stewards should be contacted for approval prior to submitting a request for training. The current training being conducted is using ArcGIS 10.5.1. The next available NHD Training will be NHD Update Tool Training Part 2 on September 26, 2019).

NHD Update Tool Training Part 2 begins at 10:30 AM Eastern Time and runs for five hours (including breaks). Part 2 (follow up to Part 1) will be a review of the Quality Control (QC) process including reviewer table, a review of Initial QC, Severity 1 versus Severity 3 errors, discussion of the errors one might see in the NHD and how to resolve those errors. We will then discuss Final QC and uploading your edits to the NHD National Geodatabase.

For more information about this training please contact Tatyana Dimascio ([tdimascio@usgs.gov](mailto:tdimascio@usgs.gov), 303-202-4206), Joel Skalet ([jjskalet@usgs.gov](mailto:jjskalet@usgs.gov), 608-238-9333 x152), or Bill Smith ([wjsmith@usgs.gov](mailto:wjsmith@usgs.gov), 573-308-3593).

---

## Photo of the Month

This photo Scott's Run Falls on the Potomac River was taken using the “comic book” filter by Vanessa Baez (Reach code 02070008000458). This is one of the rarest biological ecosystems in the mid-Atlantic.

We'd love to see photos of the hydrology near you or from your travels! Please send submissions to Alexander Jones ([ajonesi@usgs.gov](mailto:ajonesi@usgs.gov)).



---

## Hydrography Quiz

Email your answer to Becci Anderson ([rdanderson@usgs.gov](mailto:rdanderson@usgs.gov))

Congrats to **Becca Conklin**, who won this month's quiz with the correct answer of the **Snake River**. Well done, Becca!

**Thanks to everyone else who played along:** Evan Hammer, Laurie Morgan, Joseph Kerski, Marc Weber, Ed Clark, Charley Palmer, Bob Harmon, Jim McDonald, Barbara Rosenbaum, Roger Barlow, Joshua Keeley, Robert Thomas, and Michael Pipp.

### This month's quiz (by Vanessa Baez):

This river is a 137-mile-long distributary of the Mississippi River and Red River. It flows south, just west of the Mississippi River and is the fifth largest river in North America, by discharge. The name comes from Choctaw for "long river". The river's valley was designated a National Heritage Area in 2006.



## Upcoming USGS Hydrography Calls, Trainings, and Meetings

Date	Time	Event
9/24	9:00 AM ET	NHD/WBD Advisory Call
9/26	10:30 AM ET	NHD Update Tools Training Part 2 (QC)

To be added to the NHD/WBD Advisory Call email list, please contact [nhd@usgs.gov](mailto:nhd@usgs.gov). For more information on technical exchange meetings and trainings, please see the [Hydrographic Data Community \(HDC\)](#) site. For access to the HDC site, please contact Lily Niknami ([lniknami@usgs.gov](mailto:lniknami@usgs.gov)).

---

### Thank you to this month's USGS National Hydrography Dataset Newsletter contributors:

Tatyana Dimascio, Sergio Rodriguez, Karen Adkins, Hayley Thompson, Travis Landauer, Kimberly Jones, Lily Niknami, Joel Skalet, Bill Smith, Vanessa Baez, Alexander Jonesi, Al Rea, Sue Buto, and Becci Anderson.

## Join Our Community!

For more information, to sign up for the newsletter, or to contribute, please contact Becci Anderson, Hydrography Management and Planning Lead, at [rdanderson@usgs.gov](mailto:rdanderson@usgs.gov).

*Visit us anytime at [usgs.gov/NatHydro](https://usgs.gov/NatHydro) and follow us on Twitter [@USGSNHD](https://twitter.com/USGSNHD)*

*Any use of trade, product, or firm names is for descriptive purposes only and does not imply endorsement by the U.S. Government.*